



WESTERN CIRCUS

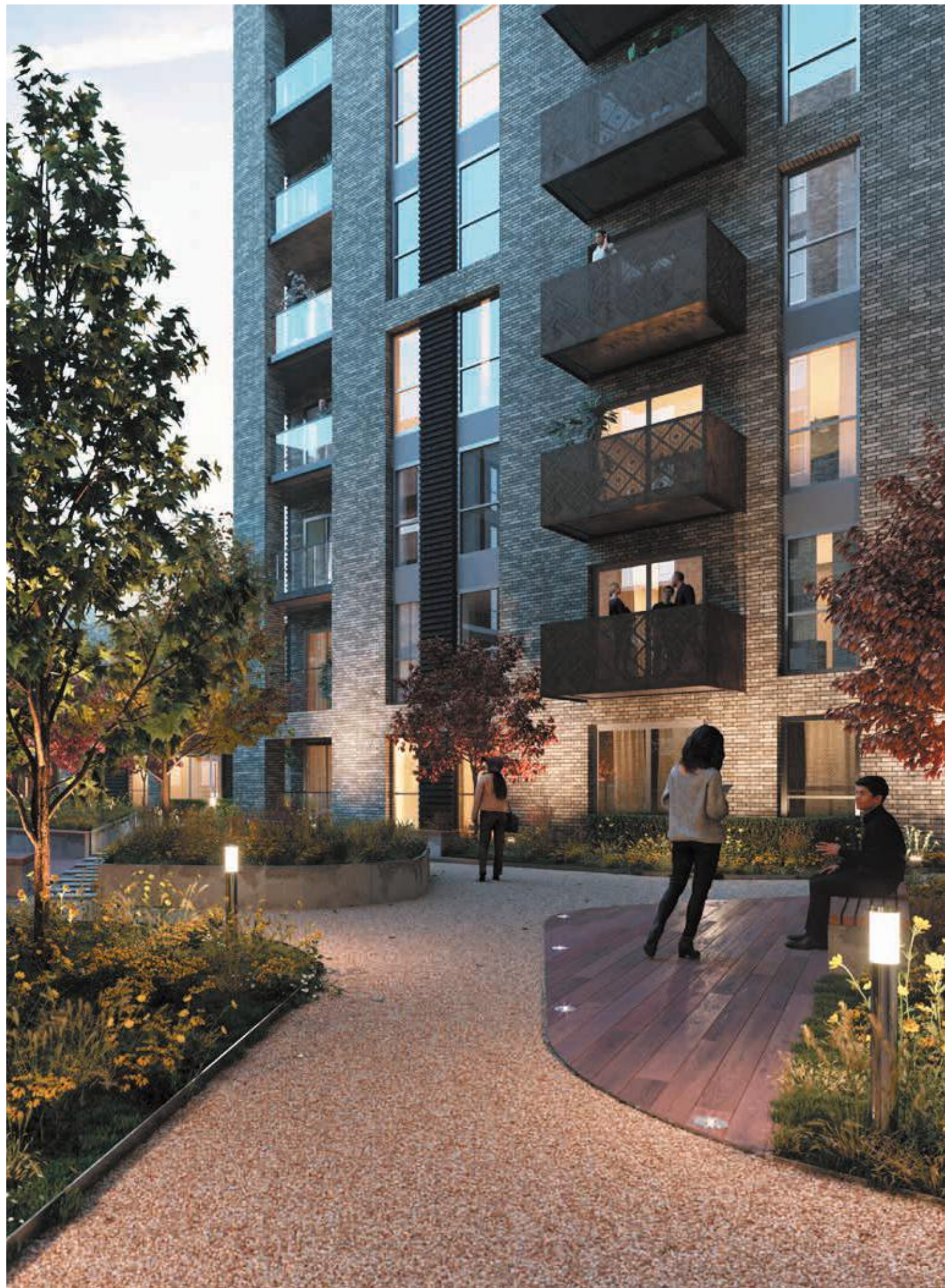
ACTON W3



BARNUM APARTMENTS
ONE, TWO AND THREE-BEDROOM FLOORPLANS

BARRATT
— LONDON —

WELCOME TO
WESTERN CIRCUS



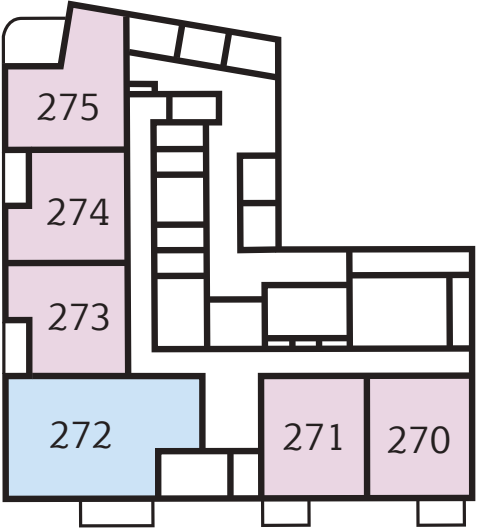
Site plan

At Western Circus, Acton, we are building 364 new one, two and three-bedroom apartments. Spread over four floors, Barnum Apartments will consist of 31 new homes, all with private outdoor space.

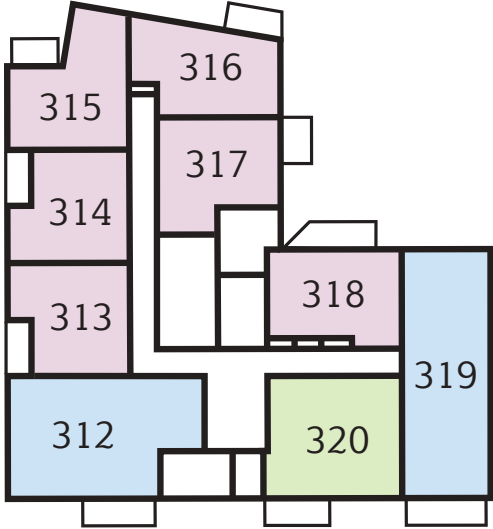
Private outdoor space	Far-reaching views of London
Landscaped communal gardens	Car Club scheme
Lidl supermarket	5-minute walk to East Acton Underground
Café or shop*	23 minutes to Oxford Circus
*subject to planning	



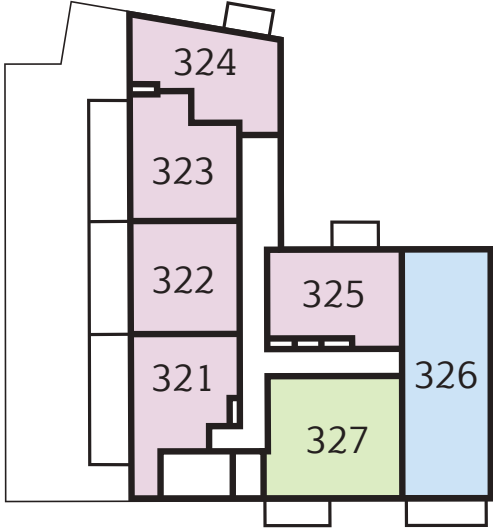
Level 1



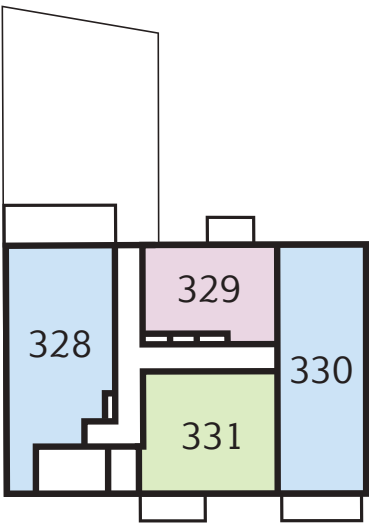
Level 2



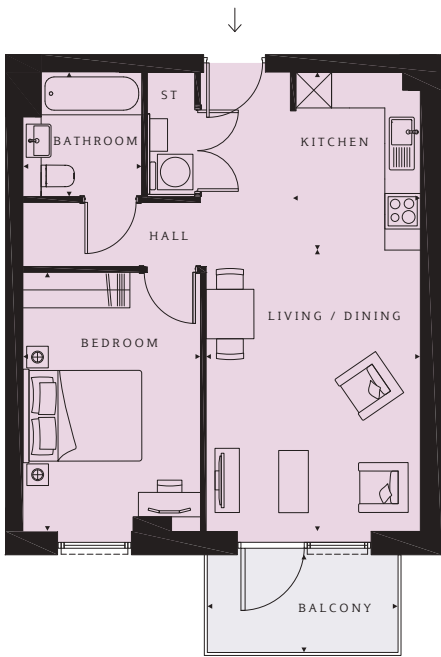
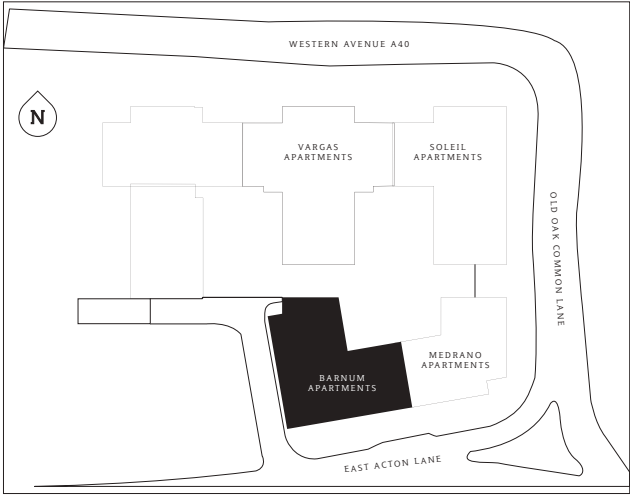
Level 3



Level 4

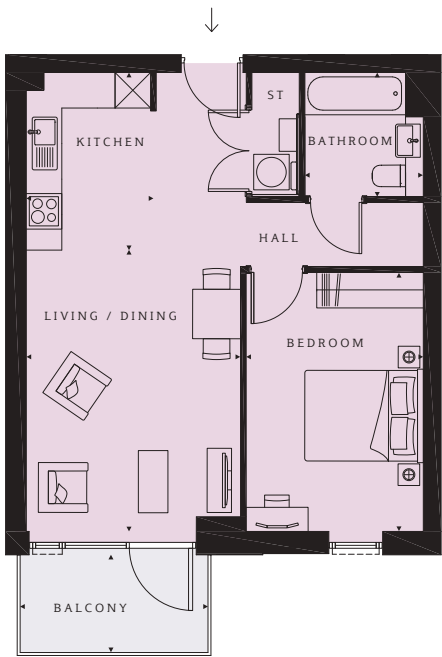
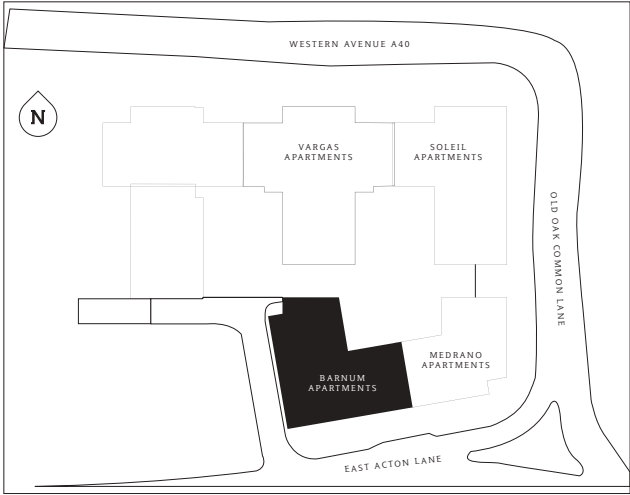


Barnum Apartments 1 bedroom apartment



Level 1

Barnum Apartments 1 bedroom apartment

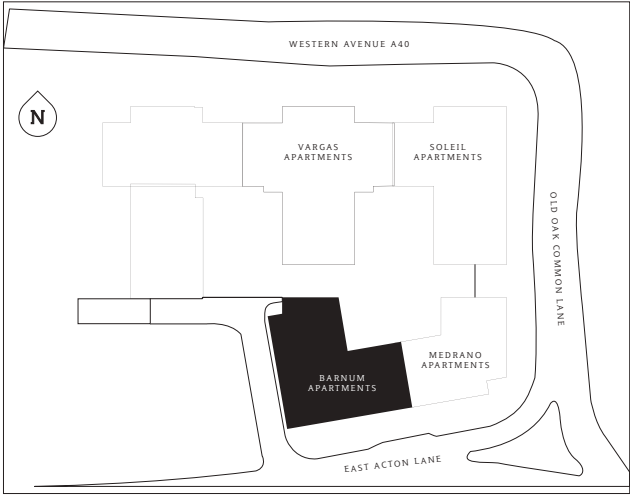


Level 1

PLOT 270 (1)
Living/Dining 15'7" x 11'10" (4751 x 3619mm)
Kitchen 9'10" x 7'1" (3000 x 2148mm)
Bedroom 14'4" x 9'10" (4375 x 2992mm)
Bathroom 6'11" x 6'7" (2100 x 2000mm)
TOTAL AREA 566.8 sq ft (52.7 sq m)
Balcony 10'5" x 5'5" (3173 x 1650mm)

PLOT 271 (1)
Living/Dining 15'7" x 11'10" (4751 x 3619mm)
Kitchen 9'10" x 7'1" (3000 x 2148mm)
Bedroom 14'4" x 9'10" (4375 x 2992mm)
Bathroom 6'11" x 6'7" (2100 x 2000mm)
TOTAL AREA 566.8 sq ft (52.7 sq m)
Balcony 10'5" x 5'5" (3173 x 1650mm)

Barnum Apartments 1 bedroom apartment



PLOTS 273 (1), 313 (2)

Living/Dining
13'4" x 12'1" (4062 x 3670mm)

Kitchen
9'0" x 8'2" (2750 x 2500mm)

Bedroom
13'11" x 11'4" (4251 x 3456mm)

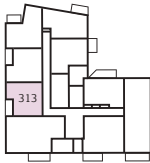
Bathroom
6'11" x 6'7" (2100 x 2000mm)

TOTAL AREA
544.9 sq ft (50.6 sq m)

Balcony
10'9" x 5'0" (3273 x 1525mm)

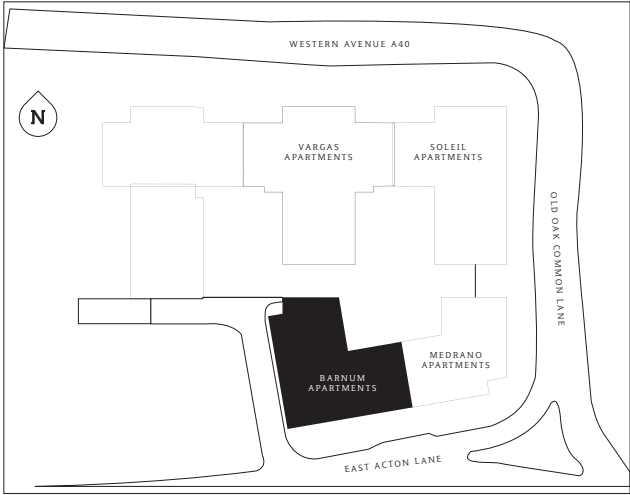


Level 1



Level 2

Barnum Apartments 1 bedroom apartment



PLOTS 274 (1), 314 (2)

Living/Dining
13'4" x 12'1" (4062 x 3670mm)

Kitchen
9'0" x 8'2" (2750 x 2500mm)

Bedroom
13'11" x 11'4" (4251 x 3456mm)

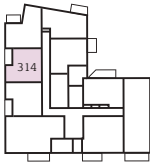
Bathroom
6'11" x 6'7" (2100 x 2000mm)

TOTAL AREA
544.9 sq ft (50.6 sq m)

Balcony
10'9" x 5'0" (3273 x 1525mm)

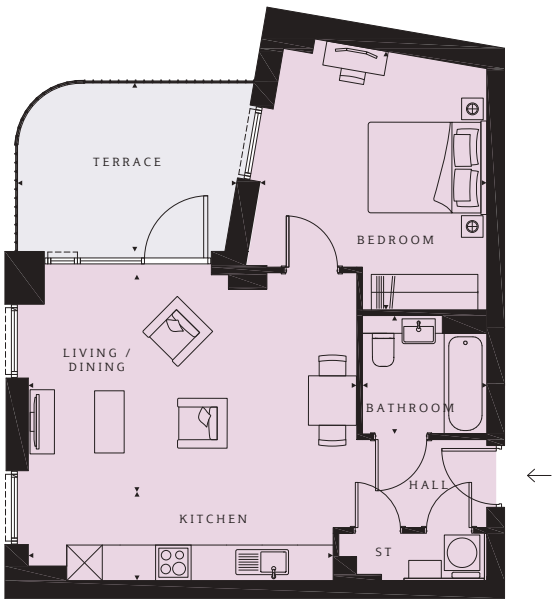
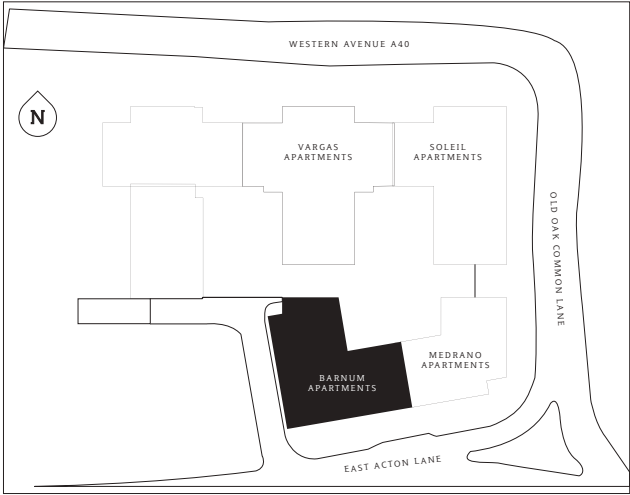


Level 1



Level 2

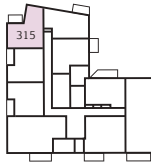
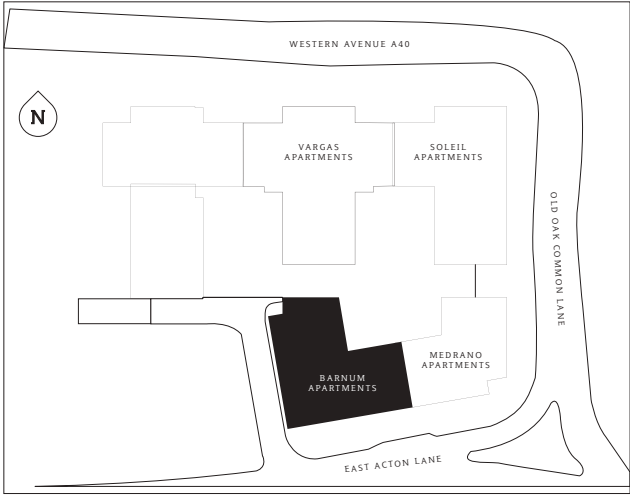
Barnum Apartments
1 bedroom
apartment



Level 1

PLOT 275 (1)
Living/Dining 18'3" x 12'0" (5550 x 3663mm)
Kitchen 16'11" x 4'11" (5150 x 1500mm)
Bedroom 14'4" x 12'6" (4366 x 3821mm)
Bathroom 6'11" x 6'7" (2100 x 2000mm)
TOTAL AREA 591.1 sq ft (54.9 sq m)
Terrace 12'2" x 9'4" (3719 x 2847mm)

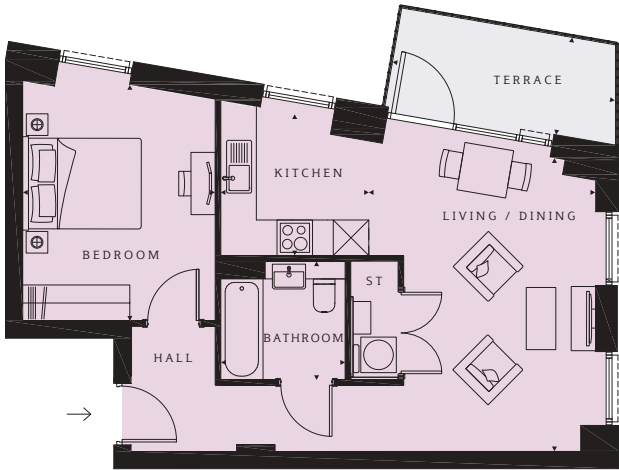
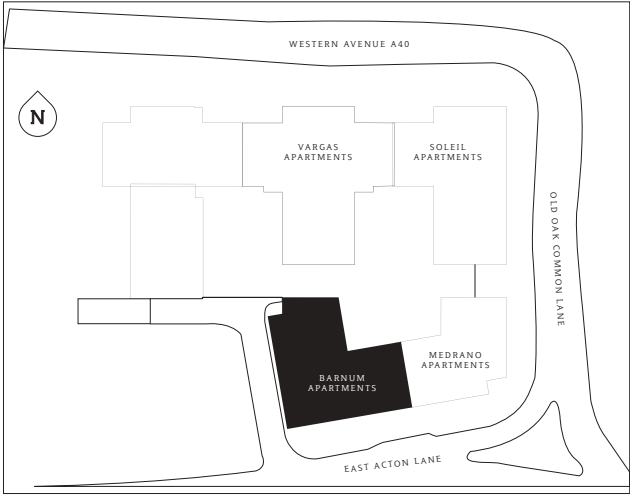
Barnum Apartments
1 bedroom
apartment



Level 2

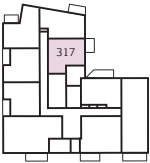
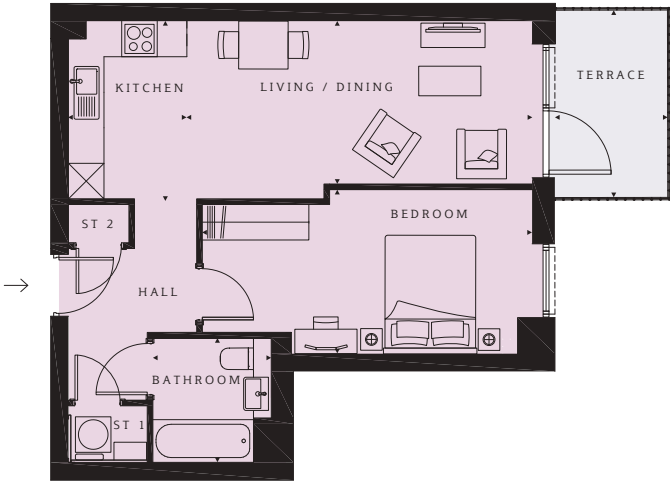
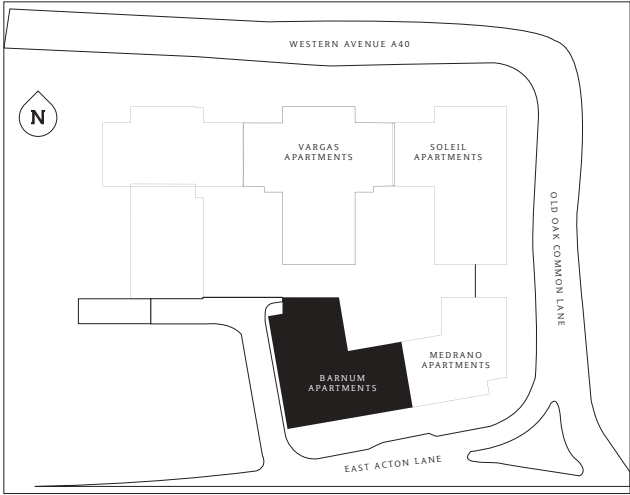
PLOT 315 (2)
Living/Dining 18'3" x 12'0" (5550 x 3663mm)
Kitchen 16'11" x 4'11" (5150 x 1500mm)
Bedroom 14'4" x 12'6" (4366 x 3821mm)
Bathroom 6'11" x 6'7" (2100 x 2000mm)
TOTAL AREA 591.1 sq ft (54.9 sq m)
Balcony 10'5" x 5'5" (3173 x 1650mm)

Barnum Apartments 1 bedroom apartment



Level 2

Barnum Apartments 1 bedroom apartment



Level 2

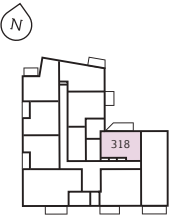
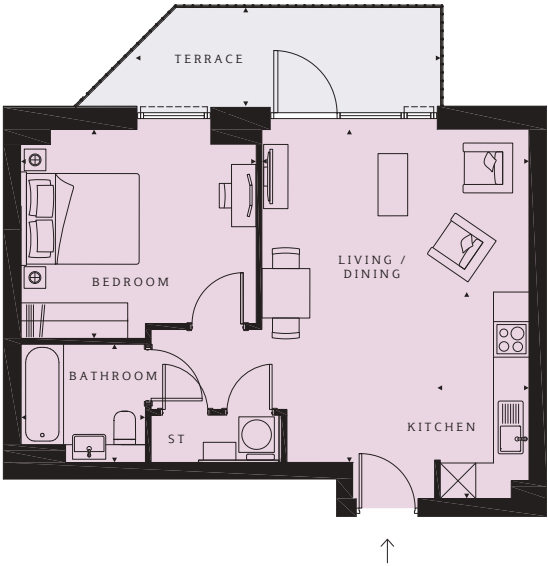
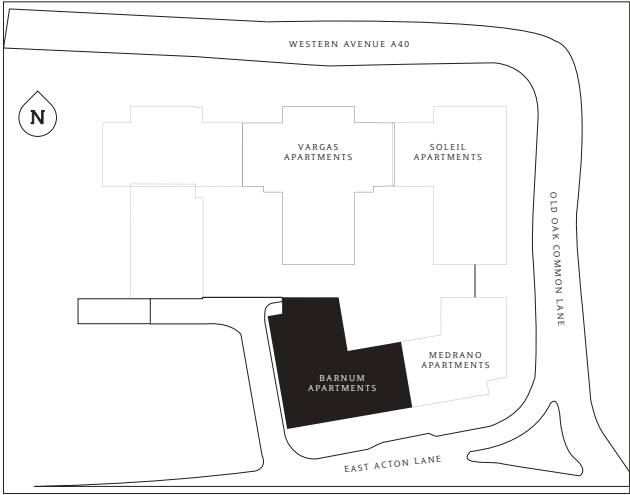
PLOT 316 (2)

- Living/Dining**
16'3" x 12'7" (4957 x 3825mm)
- Kitchen**
8'2" x 7'6" (2500 x 2288mm)
- Bedroom**
13'1" x 10'8" (3980 x 3243mm)
- Bathroom**
6'11" x 6'7" (2100 x 2000mm)
- TOTAL AREA**
555.6 sq ft (51.6 sq m)
- Terrace**
12'8" x 5'6" (3865 x 1668mm)

PLOT 317 (2)

- Living/Dining**
19'2" x 9'0" (5832 x 2751mm)
- Kitchen**
10'0" x 6'7" (3035 x 2000mm)
- Bedroom**
18'3" x 9'1" (5571 x 2770mm)
- Bathroom**
6'11" x 6'7" (2100 x 2000mm)
- TOTAL AREA**
551.7 sq ft (51.3 sq m)
- Terrace**
10'5" x 6'3" (3164 x 1899mm)

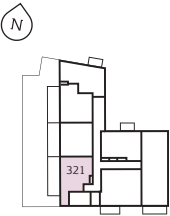
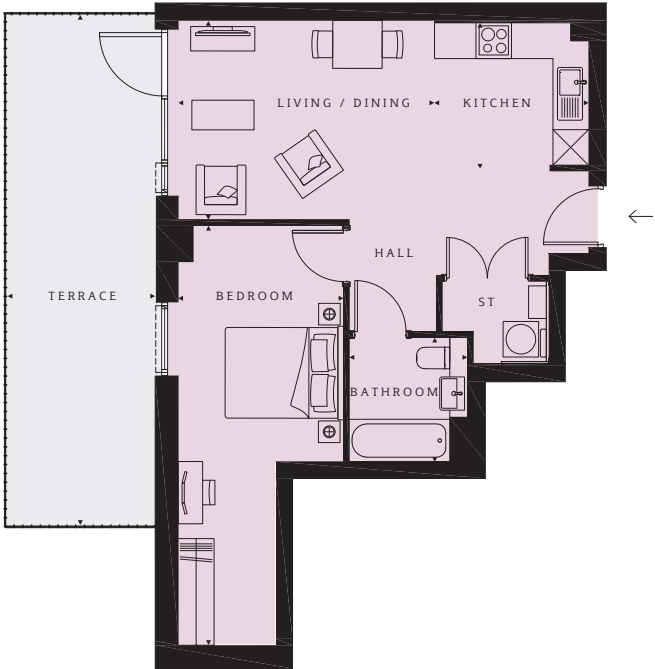
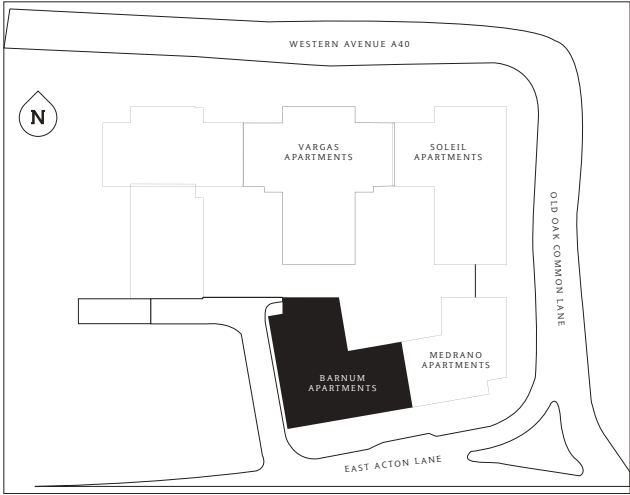
Barnum Apartments 1 bedroom apartment



Level 2

PLOT 318 (2)
Living/Dining 18'5" x 14'10" (5622 x 4514mm)
Kitchen 11'5" x 5'1" (3487 x 1548mm)
Bedroom 13'0" x 11'7" (3972 x 3527mm)
Bathroom 6'11" x 6'7" (2100 x 2000mm)
TOTAL AREA 545.6 sq ft (50.7 sq m)
Terrace 16'11" x 5'6" (5154 x 1667mm)

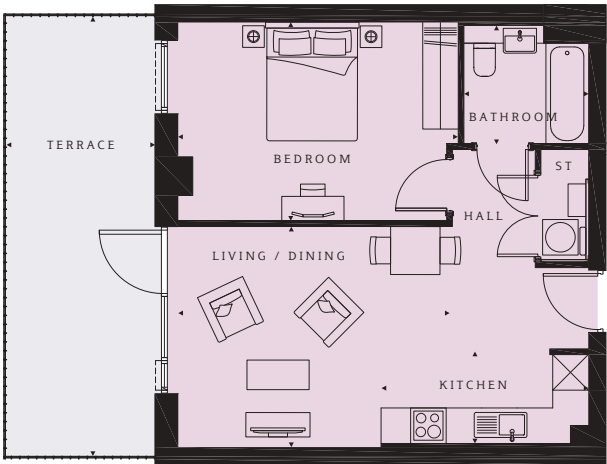
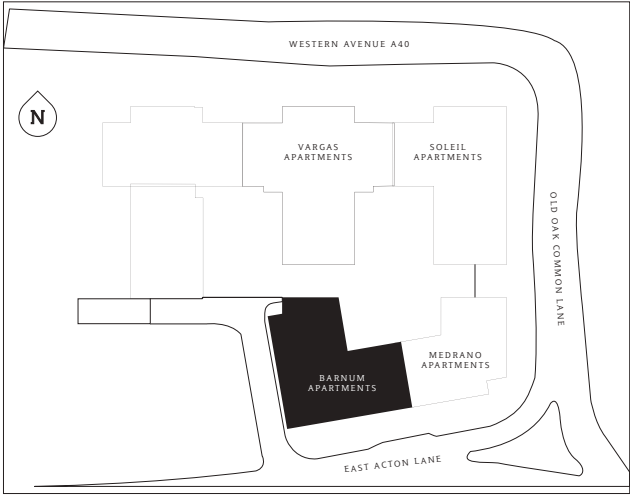
Barnum Apartments 1 bedroom apartment



Level 3

PLOT 321 (3)
Living/Dining 14'2" x 11'0" (4326 x 3361mm)
Kitchen 8'6" x 8'0" (2600 x 2448mm)
Bedroom 23'3" x 9'2" (7090 x 2788mm)
Bathroom 6'11" x 6'7" (2100 x 2000mm)
TOTAL AREA 567.2 sq ft (52.7 sq m)
Terrace 28'3" x 8'3" (8610 x 2506mm)

Barnum Apartments
1 bedroom
apartment



PLOT 322 (3)

Living/Dining
15'0" x 12'3" (4584 x 3724mm)

Kitchen
11'6" x 5'1" (3500 x 1548mm)

Bedroom
15'6" x 11'0" (4731 x 3350mm)

Bathroom
6'11" x 6'7" (2100 x 2000mm)

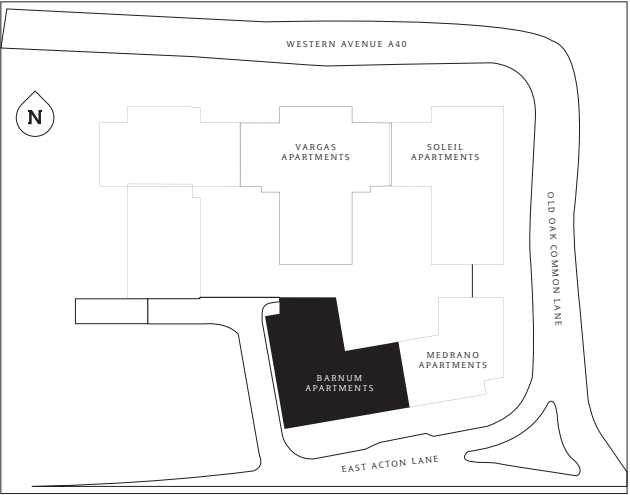
TOTAL AREA
539.2 sq ft (50.1 sq m)

Terrace
24'4" x 8'3" (7422 x 2506mm)



Level 3

Barnum Apartments
1 bedroom
apartment



PLOT 323 (3)

Living/Dining
14'11" x 12'2" (4538 x 3696mm)

Kitchen
10'7" x 5'9" (3230 x 1748mm)

Bedroom
12'0" x 11'9" (3659 x 3586mm)

Bathroom
6'11" x 6'7" (2100 x 2000mm)

TOTAL AREA
544.8 sq ft (50.6 sq m)

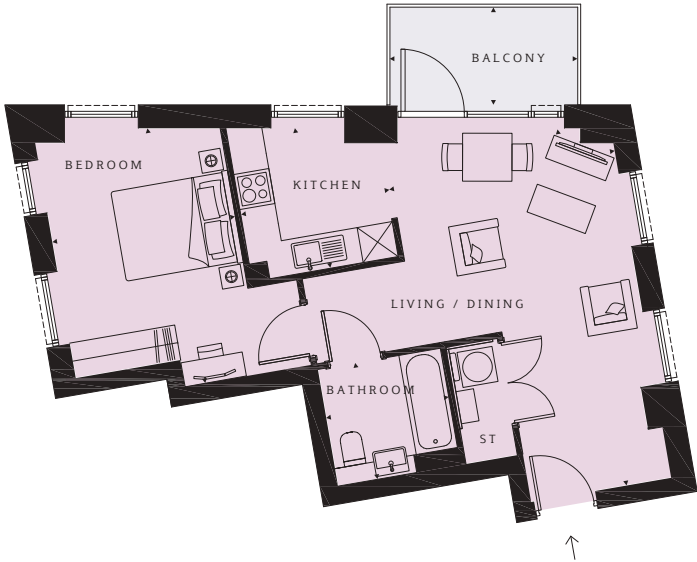
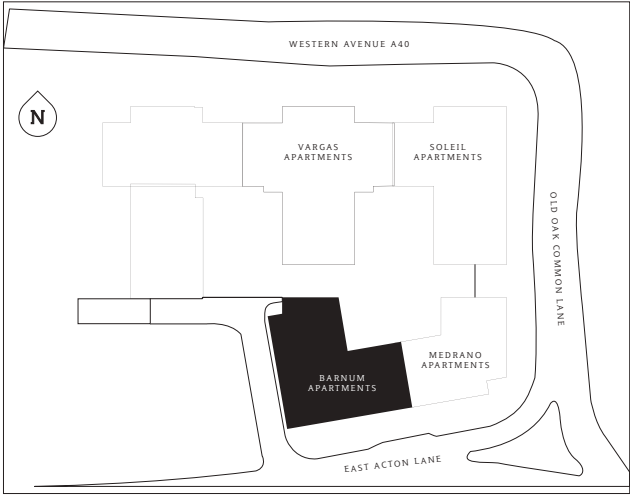
Terrace
26'4" x 8'3" (8039 x 2506mm)



Level 3

Barnum Apartments

1 bedroom apartment



PLOT 324 (3)

Living/Dining
20'1" x 12'8" (6125 x 3861mm)

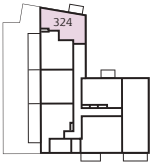
Kitchen
8'4" x 8'3" (2548 x 2502mm)

Bedroom
14'7" x 10'3" (4436 x 3122mm)

Bathroom
6'11" x 6'7" (2100 x 2000mm)

TOTAL AREA
557.5 sq ft (51.8 sq m)

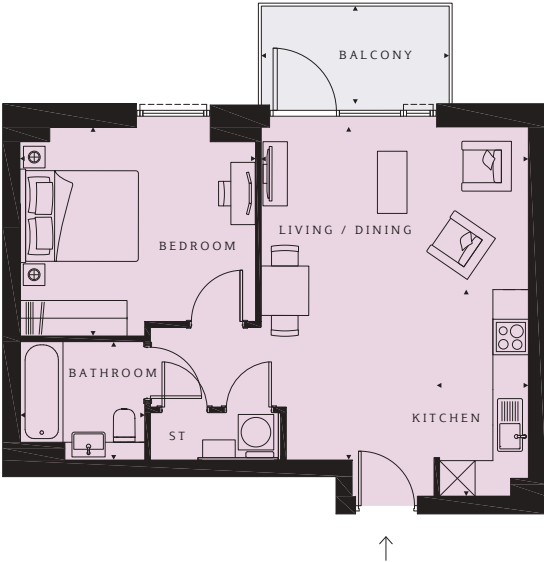
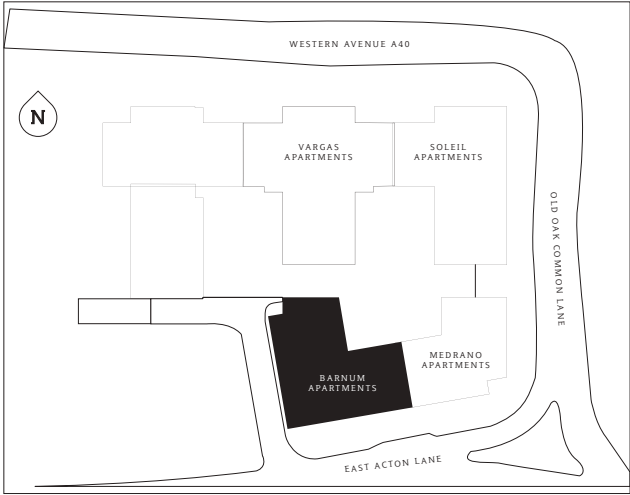
Balcony
10'5" x 5'5" (3173 x 1650mm)



Level 3

Barnum Apartments

1 bedroom apartment



PLOTS 325 (3), 329 (4)

Living/Dining
18'5" x 14'10" (5622 x 4514mm)

Kitchen
11'5" x 5'1" (3487 x 1548mm)

Bedroom
13'0" x 11'7" (3972 x3527mm)

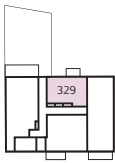
Bathroom
6'11" x 6'7" (2100 x 2000mm)

TOTAL AREA
545.6 sq ft (50.7 sq m)

Balcony
10'5" x 5'5" (3173 x 1650mm)



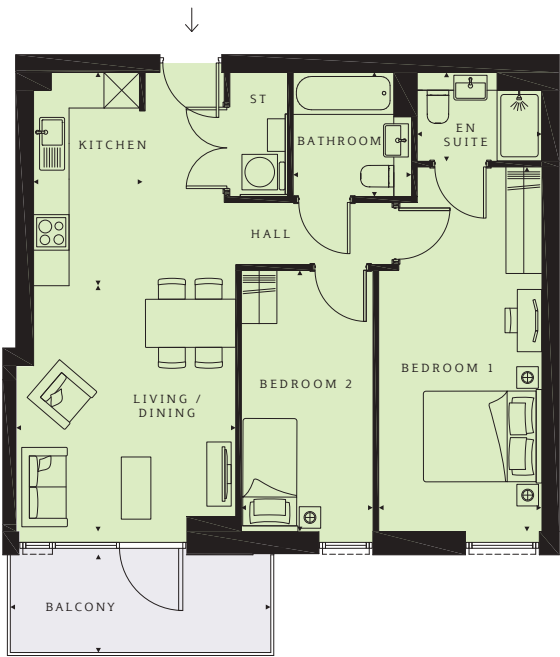
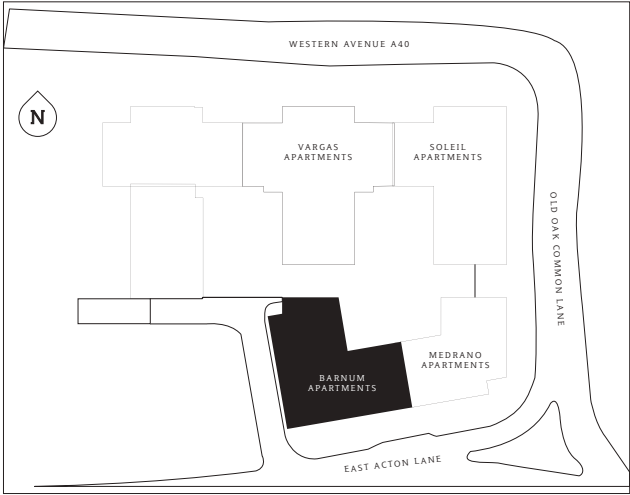
Level 3



Level 4

Barnum Apartments

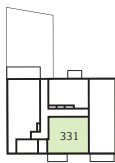
2 bedroom apartment



Level 2



Level 3

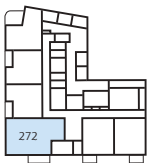
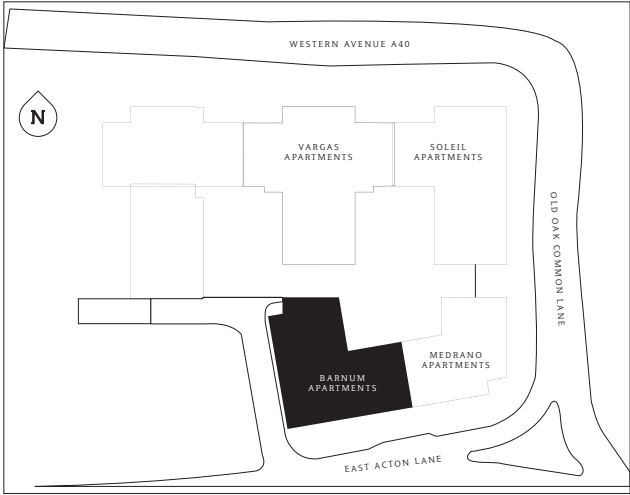


Level 4

PLOTS 320 (2), 327 (3), 331 (4)
Living/Dining 13'7" x 12'2" (4151 x 3704mm)
Kitchen 11'10" x 6'0" (3600 x 1837mm)
Bedroom 1 20'2" x 9'0" (6156 x 2751mm)
En suite 6'11" x 4'11" (2100 x 1500mm)
Bedroom 2 14'6" x 7'4" (4411 x 2225mm)
Bathroom 6'11" x 6'7" (2100 x 2000mm)
TOTAL AREA 733.8 sq ft (68.2 sq m)
Balcony 14'5" x 5'5" (4400 x 1650mm)

Barnum Apartments

3 bedroom apartment



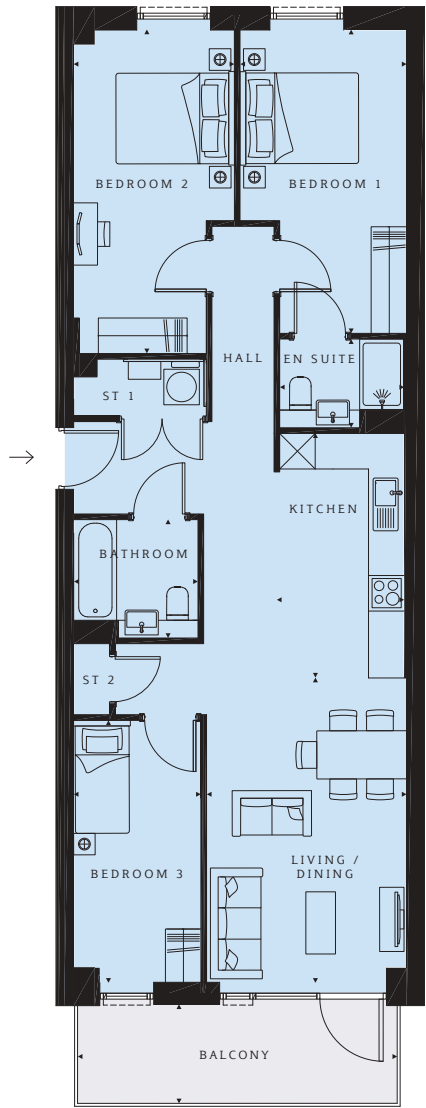
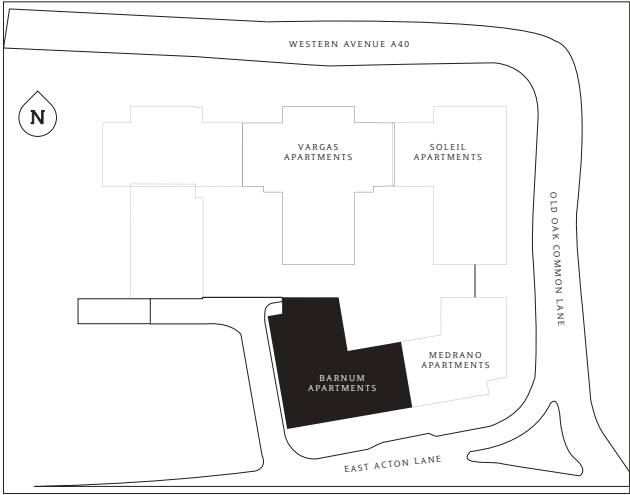
Level 1



Level 2

PLOTS 272 (1), 312 (2)
Living/Dining 19'2" x 13'10" (5840 x 4207mm)
Kitchen 9'10" x 6'10" (2993 x 2095mm)
Bedroom 1 15'9" x 11'6" (4801 x 3495mm)
En suite 8'2" x 8'2" (2500 x 2500mm)
Bedroom 2 15'3" x 9'0" (4650 x 2751mm)
Bedroom 3 9'11" x 8'6" (3015 x 2580mm)
Bathroom 6'11" x 6'7" (2100 x 2000mm)
TOTAL AREA 971.4 sq ft (90.3 sq m)
Balcony 16'1" x 5'5" (4900 x 1650mm)

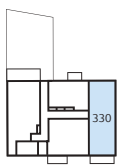
Barnum Apartments
3 bedroom
apartment



Level 2



Level 3



Level 4

PLOT 319 (2), 326 (3), 330 (4)

Living/Dining
16'10" x 11'1" (5139 x 3381mm)

Kitchen
13'7" x 7'1" (4130 x 2148mm)

Bedroom 1
16'10" x 9'3" (5124 x 2815mm)

En suite
6'11" x 4'11" (2100 x 1500mm)

Bedroom 2
17'11" x 8'11" (5464 x 2715mm)

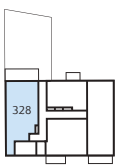
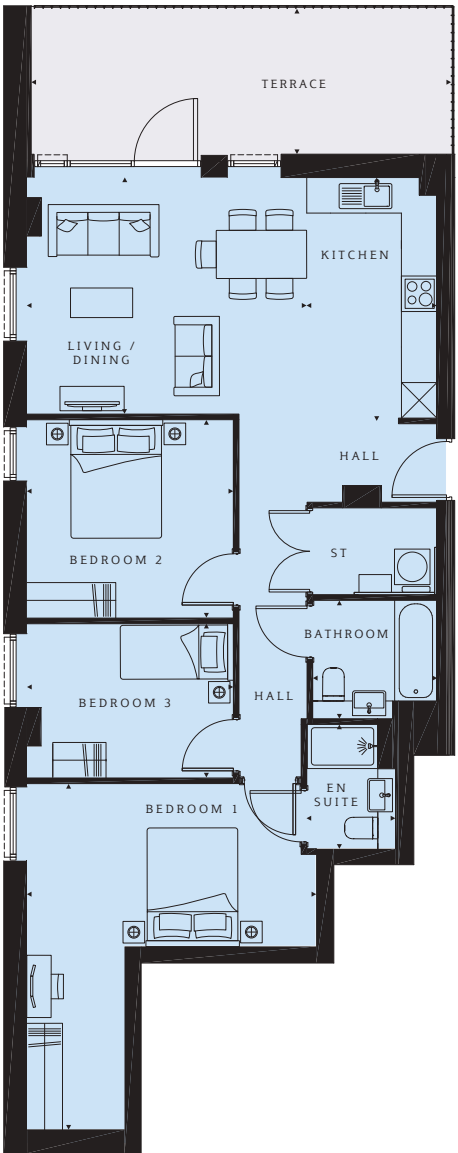
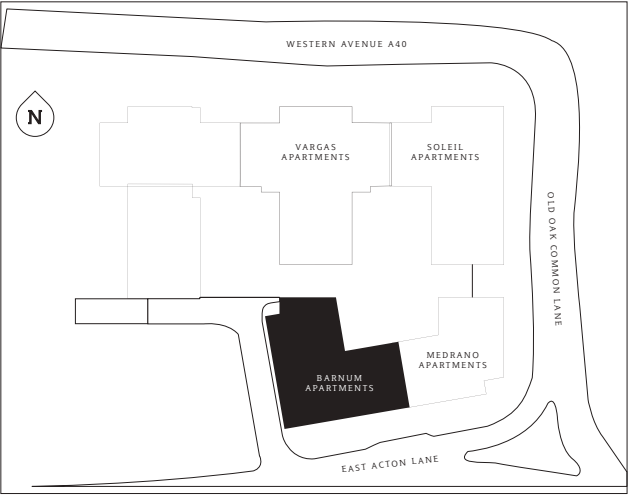
Bedroom 3
14'6" x 7'1" (4424 x 2149mm)

Bathroom
6'11" x 6'7" (2100 x 2000mm)

TOTAL AREA
981.5 sq ft (91.2 sq m)

Balcony
17'9" x 5'5" (5400 x 1650mm)

Barnum Apartments
3 bedroom
apartment



Level 4

PLOT 328 (4)

Living/Dining
15'6" x 13'9" (4727 x 4179mm)

Kitchen
13'6" x 7'3" (4110 x 2200mm)

Bedroom 1
19'2" x 16'0" (5848 x 4884mm)

En suite
6'11" x 4'11" (2100 x 1500mm)

Bedroom 2
11'5" x 11'0" (3487 x 3350mm)

Bedroom 3
11'5" x 8'7" (3487 x 2605mm)

Bathroom
6'11" x 6'7" (2100 x 2000mm)

TOTAL AREA
987.8 sq ft (91.8 sq m)

Terrace
23'2" x 8'1" (7080 x 2471mm)

Specification



Kitchen	Bathroom	En suite	General	Communal areas and facilities
Individually designed handleless kitchens with soft-close doors and drawers	White hand wash basin	White hand wash basin	Video door entry	Lifts to all floors
Matching worktops and upstands	Toilet with soft-close pan	Toilet with soft-close pan	BT TV/Sky+/FM connectivity in living area	Entrance foyer within each block
Stainless steel bowl sink and chrome tap	White bath	White bath (where applicable)	Fibre broadband connectivity	
Fully integrated appliances including combi oven, hood, ceramic hob, dishwasher and fridge/freezer	Bath screen and shower (where applicable)	Bath screen and shower (where applicable)	Pendant lighting in hallway, living area and bedrooms	
Downlighters	White freestanding shower tray (where applicable)	White freestanding shower tray (where applicable)		
	White heated towel rail	White heated towel rail		
	Ceramic wall tiles	Ceramic wall tiles		
	Shaver socket	Shaver socket		
	Downlighters	Downlighters		

The Consumer Code



The Consumer Code for Home Builders ("the Code"), which came into effect in April 2010, applies to all home builders registered with the UK's main new Home Warranty Bodies: NHBC, Premier Guarantee and LABC Warranty.

The Code gives protection and rights to purchasers of new homes. It requires all new home buyers to be treated fairly and ensure they are fully informed about their purchase before and after they sign the contract.

The aim of the Code is for all new home buyers to:

- be treated fairly
- know what levels of service to expect
- be given reliable information about their purchase and their consumer rights before and after they move in
- know how to access speedy, low-cost dispute resolution arrangements to deal with complaints about breaches of the Code.

The Code reinforces best practice among home builders to encourage a consistently high level of information and customer service. It builds on successful efforts already made by the industry to improve consumer satisfaction in recent years.

The Code covers every stage of the home-buying purchase – pre-contract, exchange of contract and during occupation.

We are committed to the Consumer Code for Home Builders. For more information on the Consumer Code for Home Builders, please visit <http://www.consumercode.co.uk/>

CONSUMER CODE FOR HOME BUILDERS

www.consumercode.co.uk

Why Barratt London?

Barratt London’s vision

Since the construction of our first London development in 1982, our goal has been to provide high-quality homes for all Londoners by focusing on excellence in design, construction and customer service. The supply of new housing is essential to the continued growth of London as a major global city and Barratt London is proud to be contributing to this with the delivery of 1,500 new homes each year.

Five-star customer service

As part of Barratt Developments PLC, the UK’s largest house builder by volume, we are fully committed to delivering a superior service for our customers and have been awarded the maximum five-star rating for customer satisfaction by the Home Builders Federation every year since 2010*. For our customers, this means that when you buy a Barratt London home, you can be confident you are buying a home of quality and receiving the very best in customer service.

*We are the only major national housebuilder to be awarded this award 12 years running. “we” refers to the Barratt Developments PLC group brands including Barratt London, Barratt Homes and David Wilson Homes.

Real peace of mind

Not only does every Barratt London home come with a ten-year structural guarantee from the NHBC, it also comes with a two-year fixtures and fittings warranty**, giving you added peace of mind from the moment you move in.

**First two years covered by Builder Warranty and NHBC Guarantee or similar. Years three-ten covered by NHBC insurance or similar. Full exclusions and limitations can be found on the NHBC website.



Harrow Square HA1



Aldgate Place E1



Camden Courtyards NW1



Nine Elms Point SW8



Hendon Waterside NW8

FIND YOUR PIECE
OF LONDON

0330 057 6666
SEARCH WESTERN CIRCUS

Computer generated images, maps and development layouts are intended for illustrative purposes and should be treated as general guidance only. The features, designs, materials and visual depictions of and in our Show Apartments and in our Show Apartment photography must be treated as general illustration and guidance. Images may also include upgrades which are available at extra cost. Furniture and furnishings are not included. Fixtures, fittings and specification may be subject to change as necessary and without notice and their accuracy or completeness is not guaranteed. Nor are they intended to form part of any contract or a warranty unless specifically incorporated into the contract. Please ask your Sales Adviser for the current specification. Individual features such as windows, brick and other materials' colours may vary, as may drainage, heating and electrical layouts. Floor plans are intended to give a general indication of the proposed floor layout only. The dimensions are accurate to within + or - 50mm. Dimensions should not be used for carpet or flooring sizes, appliance spaces or items of furniture. Please ask our Sales Adviser for details of the treatments specified for individual plots. Specification may be subject to change as necessary and without notice. Development layouts and landscaping, specification, dimensions and computer generated images are not intended to form part of any contract or warranty unless specifically incorporated in writing into the contract. The development name, Western Circus and building names are for marketing purposes only and may not be the designated postal address, which may be determined by The Post Office. All information in this document is correct to the best of our knowledge at the time of issue April 2021. Calls to 03 numbers are charged at the same rate as dialling an 01 or 02 number. If your fixed line or mobile service has inclusive minutes to 01/02 numbers, then calls to 03 are counted as part of this inclusive call volume. Non-BT customers and mobile phone users should contact their service providers for information about the cost of calls.

