



Advanced Preview Package

Enjoy Life On The Square

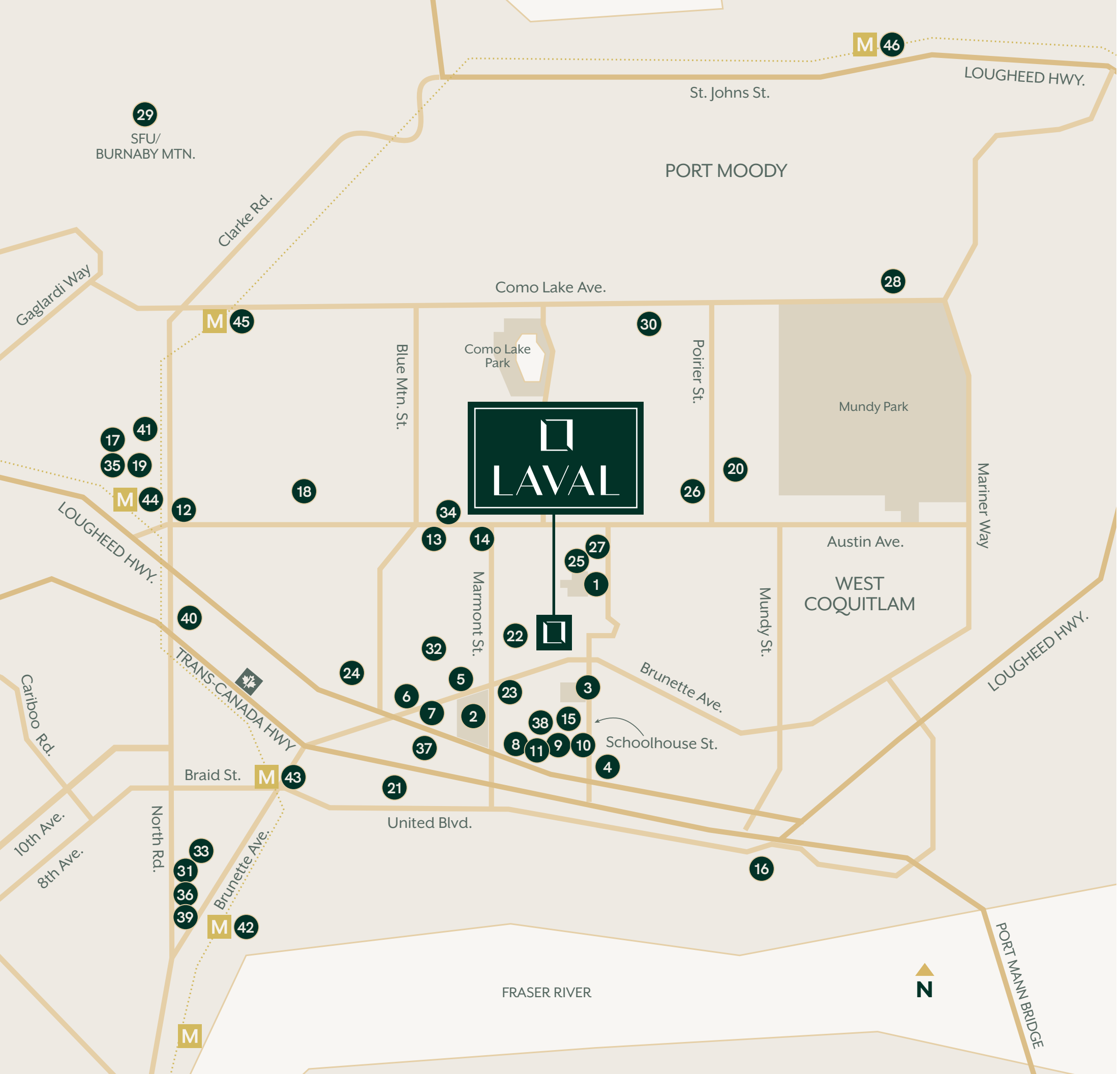
The European style “carré” - or square, was a social and cultural gathering place in days gone by. Today, Laval Square is an oasis of peace, just steps to the buzzing enclave of charming Maillardville. Here, Domus Homes is reimagining 1, 2 and 3 bedroom modern, stylish homes and townhomes, with every detail thoughtfully executed to elevate life on the square.



Explore The Vibrant Side of Maillardville

Though deeply rooted in local history, Maillardville has also grown into a bustling modern hub, with options that entice today's families. Renowned schools, arts and education programs, family-friendly parks, and desired amenities that awaken and engage. Nature lovers will enjoy exploring the greenspace and trails around Laval. But if manicured green is more your liking, head to nearby Vancouver Golf Club for some downtime.





Parks

- 1 Rochester Park Trails
- 2 Mackin Park
- 3 Schoolhouse Park

Restaurants

- 4 Cactus Club Cafe
- 5 Smoking Pig
- 6 Woody’s Pub on Brunette
- 7 My Greek Taverna
- 8 Brown’s Socialhouse Schoolhouse
- 9 Narita Sushi
- 10 C Market Coffee
- 11 Starbucks
- 12 Sushi California
- 13 John B Pub
- 14 Coffee + Vanilla

Entertainment/Recreation

- 15 Cineplex Cinemas Coquitlam and VIP
- 16 Hard Rock Casino Vancouver
- 17 Lougheed Shopping Centre
- 18 The Vancouver Golf Club
- 19 Steve Nash Fitness World
- 20 Poirier Sport & Leisure Complex
- 21 Eaglequest Golf
- 22 Place Maillardville Community Centre
- 23 Place des Arts

Education

- 24 Alderson Elementary
- 25 École Maillard Middle School
- 26 Centennial Secondary
- 27 École Rochester Elementary
- 28 École Dr. Charles Best Secondary School
- 29 Simon Fraser University
- 30 Children’s House Montessori Preschool
- 31 A&N Academic Montessori
- 32 Little Sparrows Daycare

Shopping/Services

- 33 Royal Columbian Hospital
- 34 Safeway
- 35 London Drugs
- 36 Shoppers Drug Mart
- 37 IKEA Coquitlam
- 38 Real Canadian Superstore
- 39 Save-On-Foods
- 40 H-Mart Coquitlam
- 41 Save-On-Foods

Transit

- 42 Sapperton Station
- 43 Braid Station
- 44 Lougheed Town Centre
- 45 Burquitlam Station
- 46 Moody Centre Station

A Welcoming Aesthetic, With A Fresh, Yet Familiar Feeling

Tucked quietly off Laval Square, homes at Laval blend classic charm with modern styling. Timeless exteriors are welcoming, with thoughtfully designed landscape and greenery adding character and curb-appeal, while fresh interiors are bright and inviting. Start life-long memories at Laval — a place both steeped in history and ready for new chapters to unfold.



Stunning Interiors Combine Form With Function

The modern interiors at Laval strike a fine balance of simple elegance and functionality. Choose from two tranquil colour palettes — warm or cool — that create a subtle backdrop for personal touches and your own personal aesthetic. Open-concept living is designed to gather everyone together with ease. And with floorplans ranging from 1 to 3.5 bedrooms, there's space to live and grow.



Calling All Foodies

Modern kitchens speak to both function and style. Most Laval homes have a spacious kitchen island for cooking and conversation, quick breakfasts, or a glass of wine. Minimalist, flat-panel cabinets are not only easy on the eye, but a breeze to keep clean, opening to reveal an abundance of storage and organizational space. The home cook will appreciate Laval's high-end stainless steel KitchenAid appliances, chef-worthy stove and the sophisticated yet durable quartz countertops.



Features

A HISTORIC YET EVOLVING NEIGHBOURHOOD

LAVAL is a timeless collection of 1, 2 and 3 bedroom townhomes, heritage homes and garden homes in Coquitlam's historic Maillardville neighbourhood.

Each residence is designed with a modern, fresh aesthetic and elevated luxury touches such as wide plank wood grain floors and under cabinet LED lighting. We've brightened your space with expansive balconies, terraces and oversized windows that let the light stream in.

Stunning open plan living and an easy interior-exterior flow lets you entertain with ease. Enjoy a beautiful life on the Square at Laval.



LOOK FORWARD TO COMING HOME

- Thoughtfully-designed individual front entries welcome you home
- Homes at Laval maximize your connection to the outdoors, with expansive terraces, balconies, front porches, and fenced yards
- Modern interiors created with award-winning i3 Design Group
- Two designer colour schemes
- Wide plank luxury wood grain vinyl flooring in main living areas
- Luxe pile carpeting extends on stairs, bedrooms and upstairs closets
- Modern flat panel interior doors with polished chrome hardware
- White roller shades throughout for privacy and light control
- Oversized windows in main living area
- Sophisticated exteriors with a contemporary take on traditional architecture
- Beautifully landscaped walkways
- Shared outdoor space with seating and children's playground

OUR KITCHENS ARE THE HEART OF YOUR HOME

- Modern matte white laminate upper cabinets with soft-close hinges
- Laminate wood grain lower cabinets with concealed finger pulls
- Quartz countertops
- White subway-style tile backsplash
- Stainless kitchen appliance package:
 - 30" KitchenAid energy efficiency rated French door refrigerator with bottom freezer
 - 30" KitchenAid electric range, with storage drawer
 - 30" built-in Faber hood fan with slide-out visor
 - 24" KitchenAid dishwasher
 - Panasonic Microwave with stainless steel trim
- One bedroom suites include a 24" Whirlpool refrigerator and 30" KitchenAid electric range
- Stunning island with seating area, microwave and built-in dishwasher
- Moen single-handle pull down faucet in matte black
- Under cabinet LED lighting throughout

CREATURE COMFORTS

- Thoughtful use of built-in millwork to maximize storage
- Full sized Whirlpool energy-efficient front-load washer and dryer in 2 & 3 bedroom homes
- One bedroom homes include a space-efficient 24" Whirlpool front-load washer and dryer

UNWIND IN YOUR MASTER BEDROOM ENSUITE

- Luxury quartz countertops
- Custom designed mirrored medicine cabinets
- Low profile shower with chrome framed glass door
- Luxury acrylic deep soaker tub
- Undermount white ceramic sink with chrome Moen single-handle faucet
- Clean white laminate soft-close vanities with finger pulls
- Full-height shower surround in large-format 12"x24" porcelain tiles with chevron-tiled feature wall
- Acritec dual flush soft close toilet

AMENITY OFFERINGS

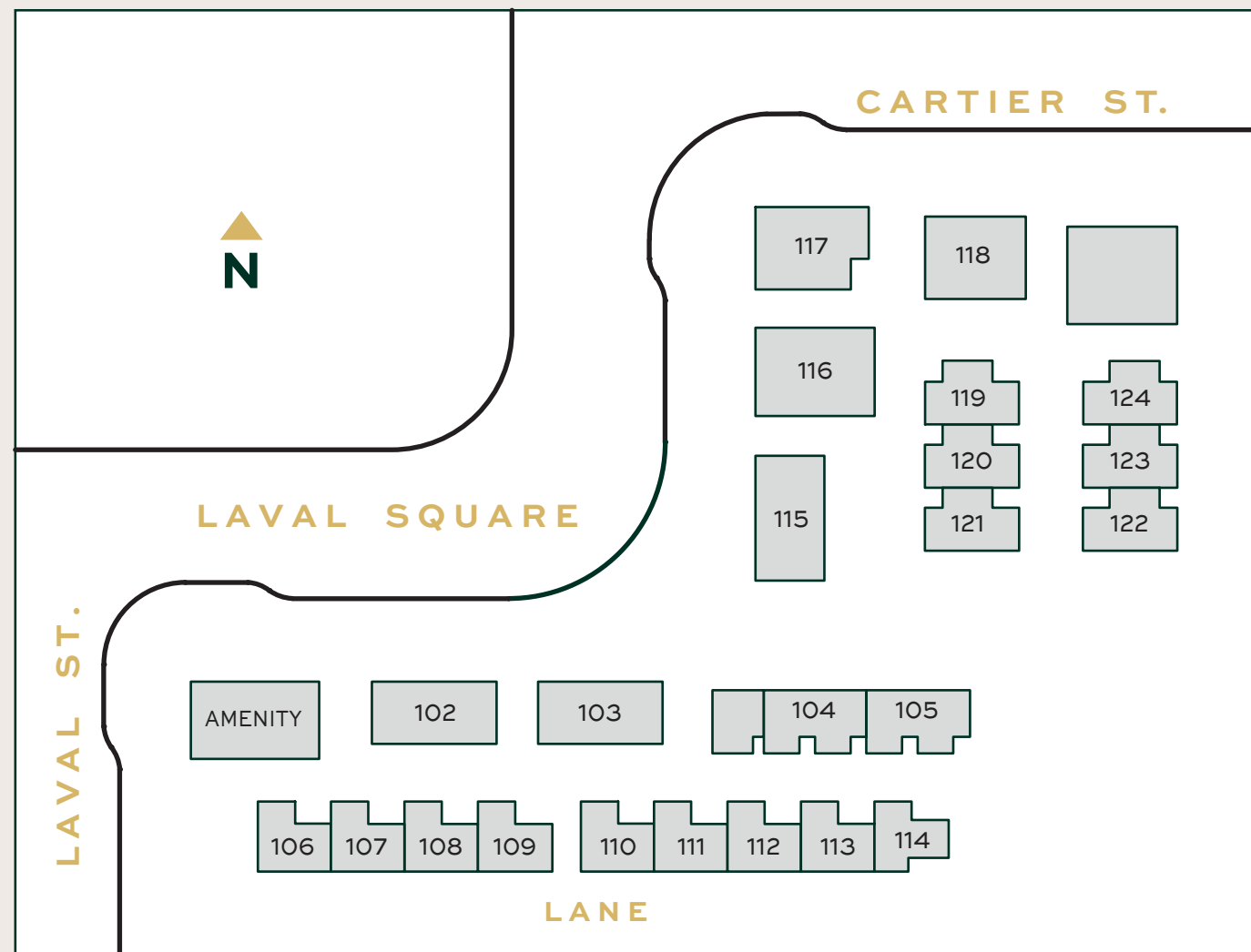
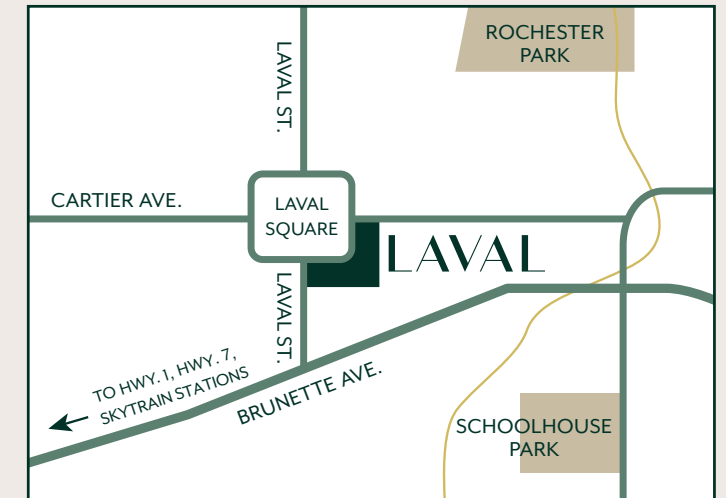
- Secure underground parking, bicycle storage and storage lockers
- All parking stalls will have roughed-in Level 2 EV charging
- Stylish flex amenity room - throw down a yoga mat, or host an event
- Wide plank wood grain luxury vinyl floor
- Spacious and handy storage cabinets
- Convenient preparation area, complete with refrigerator, sink, microwave and ample countertop and storage space

PEACE OF MIND

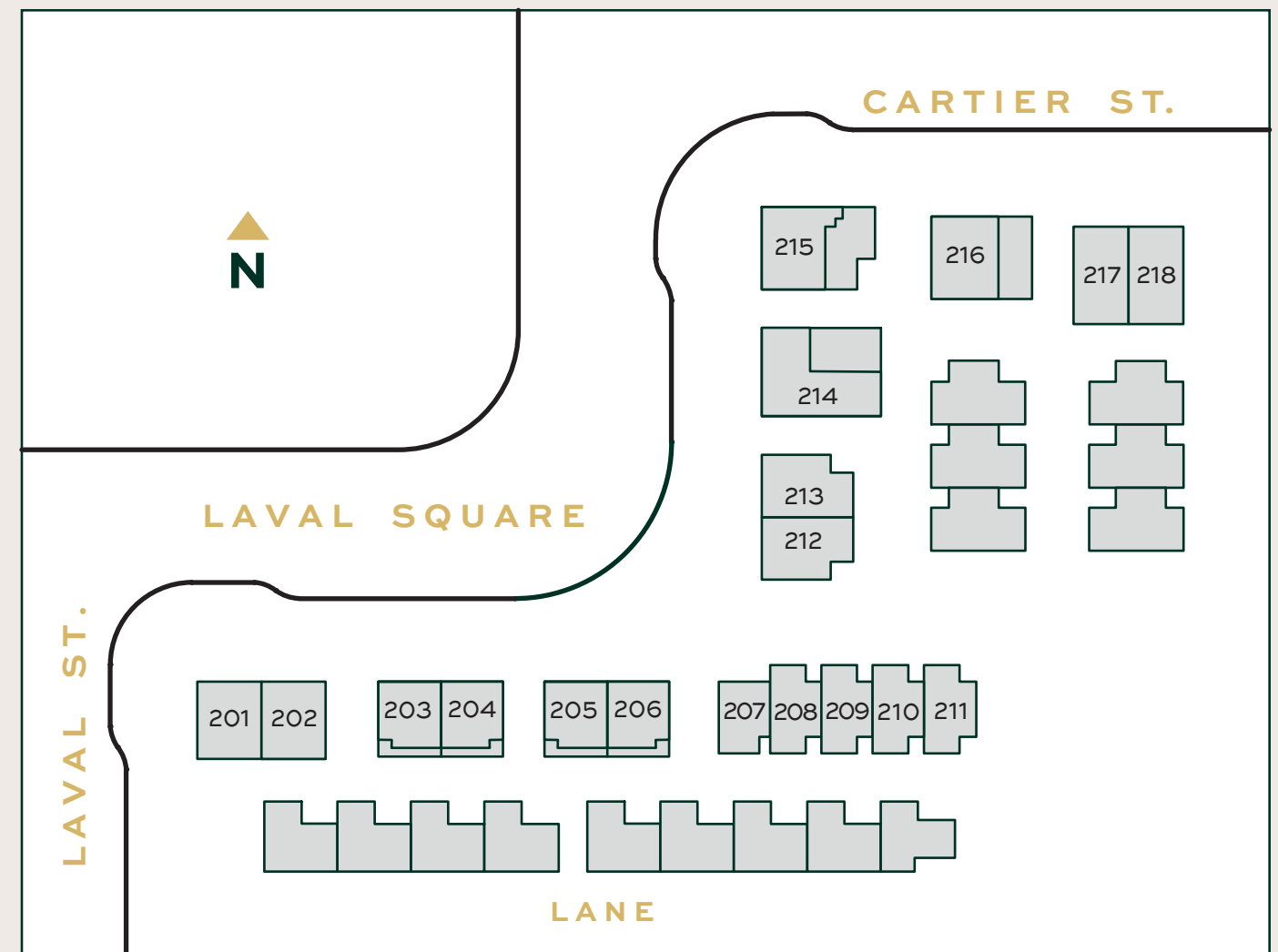
- Domus experience, quality and customer service excellence is built into every home we build
- Comprehensive Home Warranty with Travelers (2-5-10 years)



Siteplan



Level 1

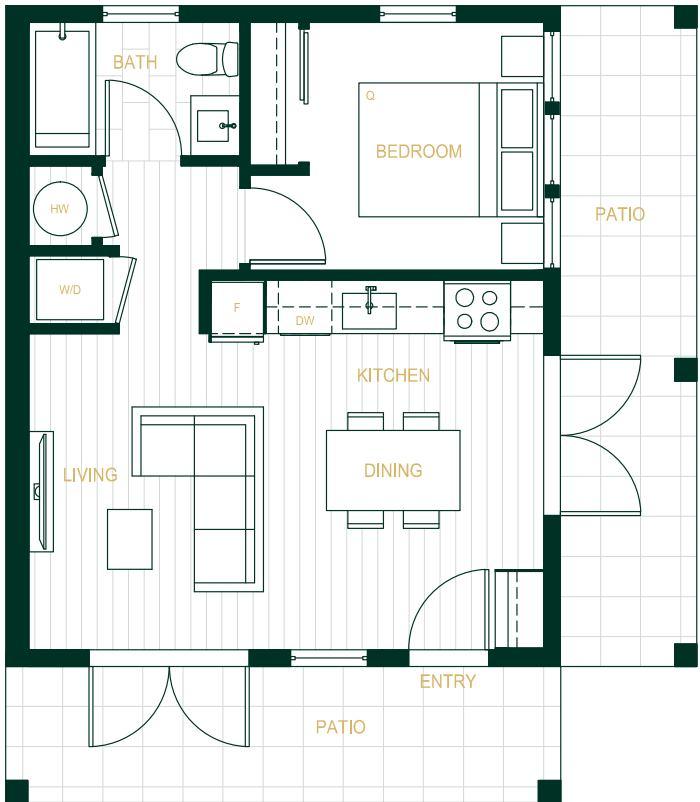
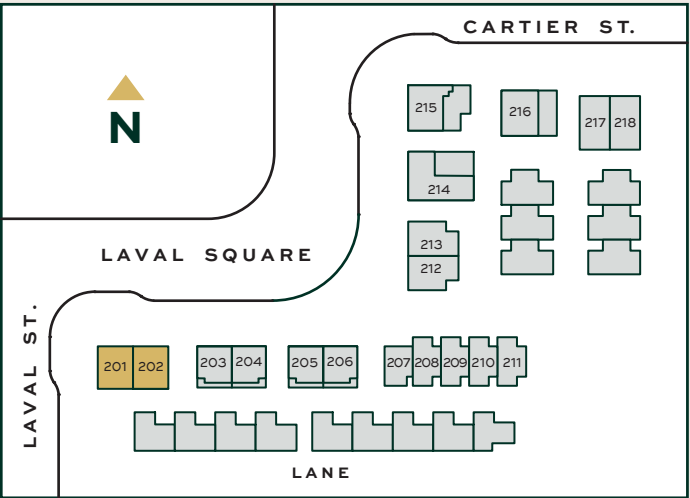


Level 2

Floorplan A1

Building 1
Units 201, 202

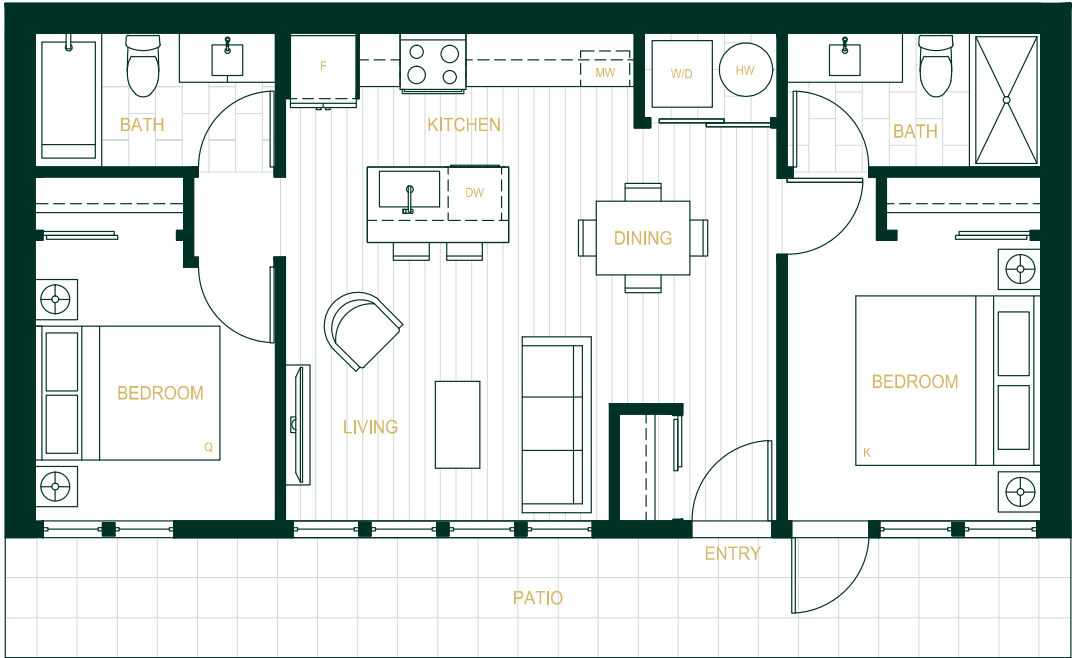
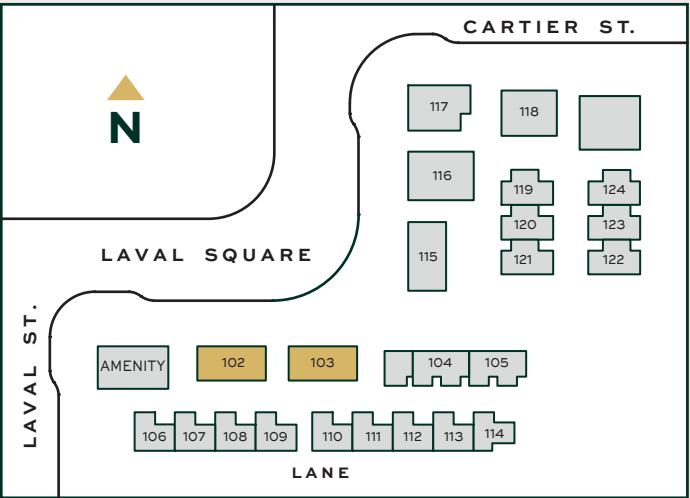
1 BEDROOM + 1 BATHROOM
497 SQ. FT.



Floorplan B1

Building 2 & 3
Units 102, 103

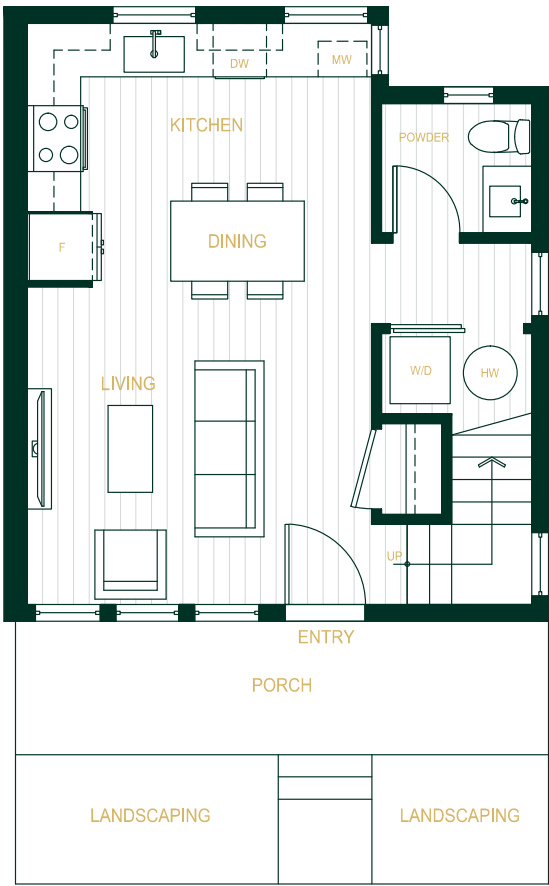
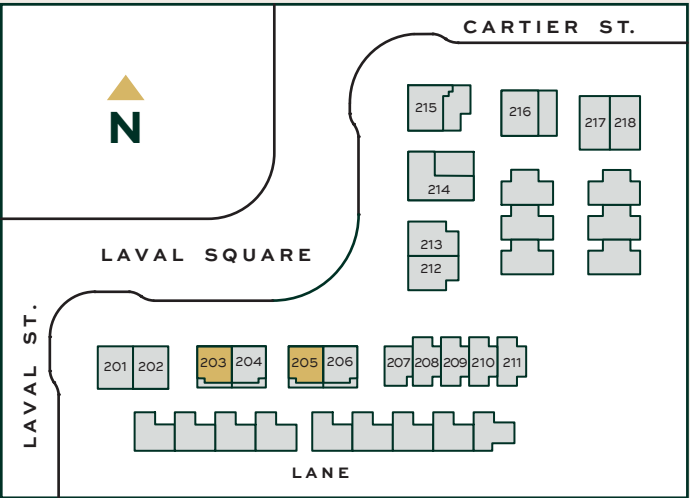
2 BEDROOM + 2 BATHROOM
790 SQ. FT.



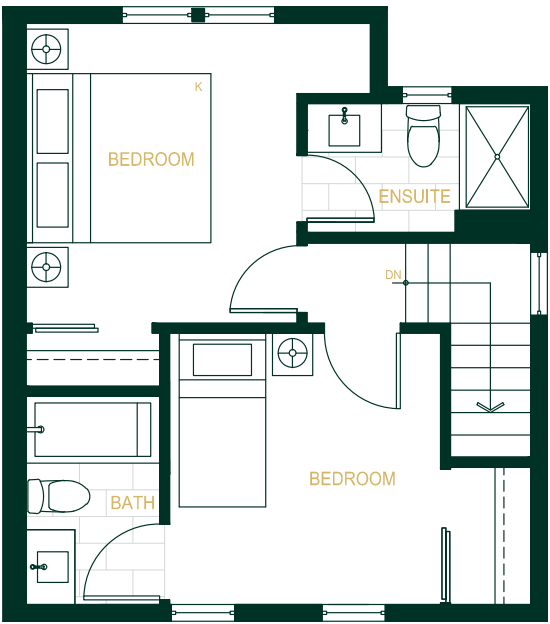
Floorplan CH1

Building 2 & 3
Units 203, 205

2 BEDROOM + 2 ½ BATHROOM
870 SQ. FT.



Main

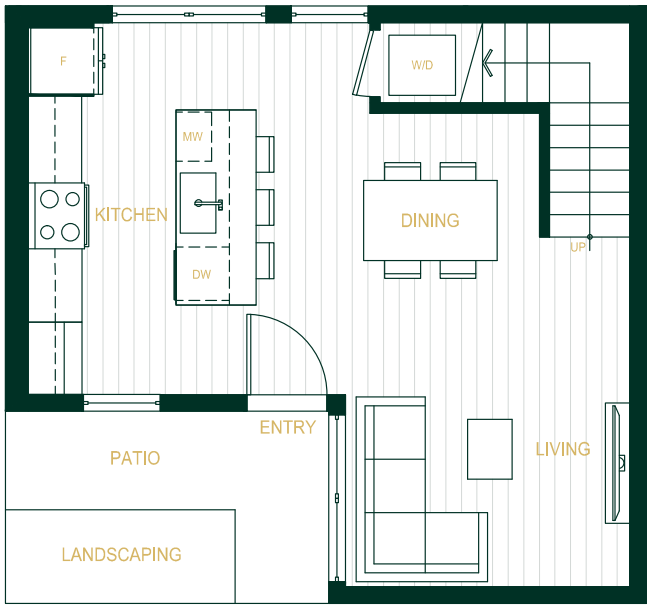
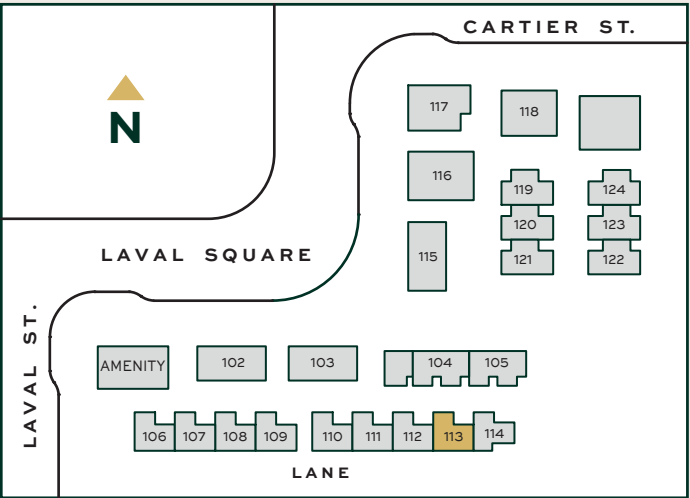


Upper

Floorplan TH1

Building 5
Unit 113

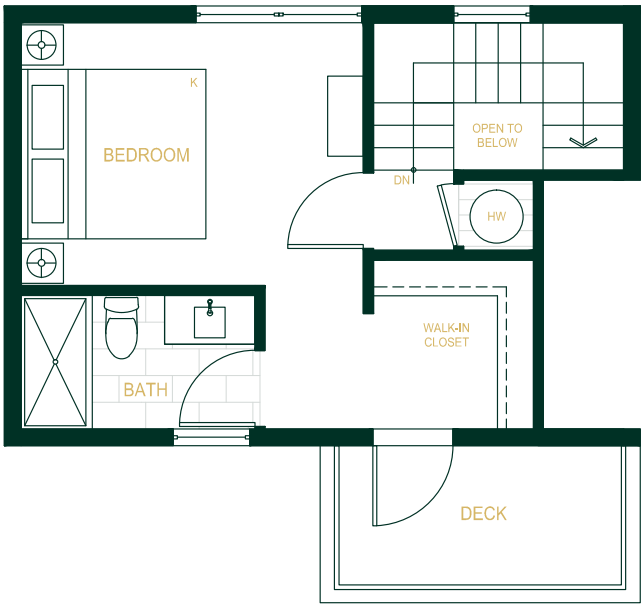
3 BEDROOM + 2 BATHROOM
1,269 SQ. FT.



Main



Second

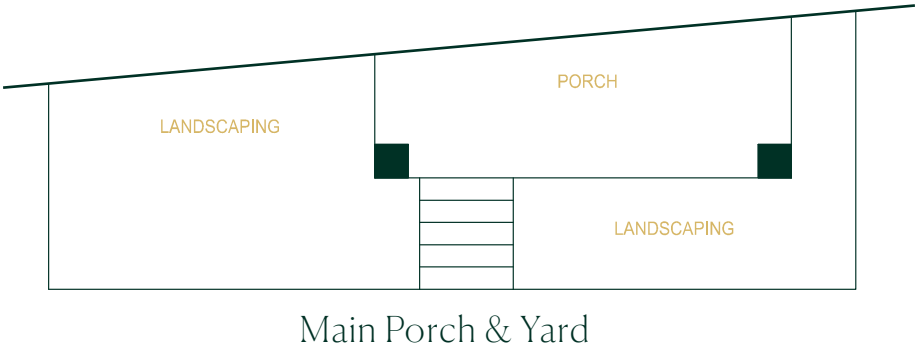
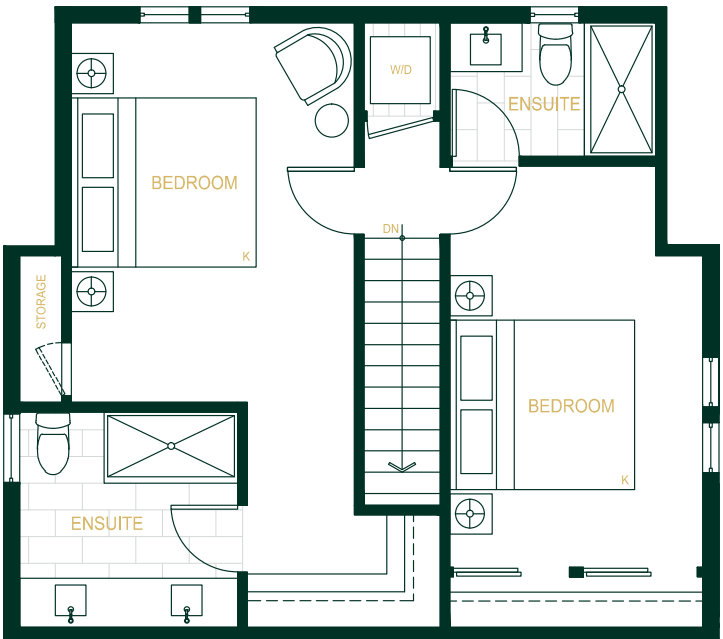
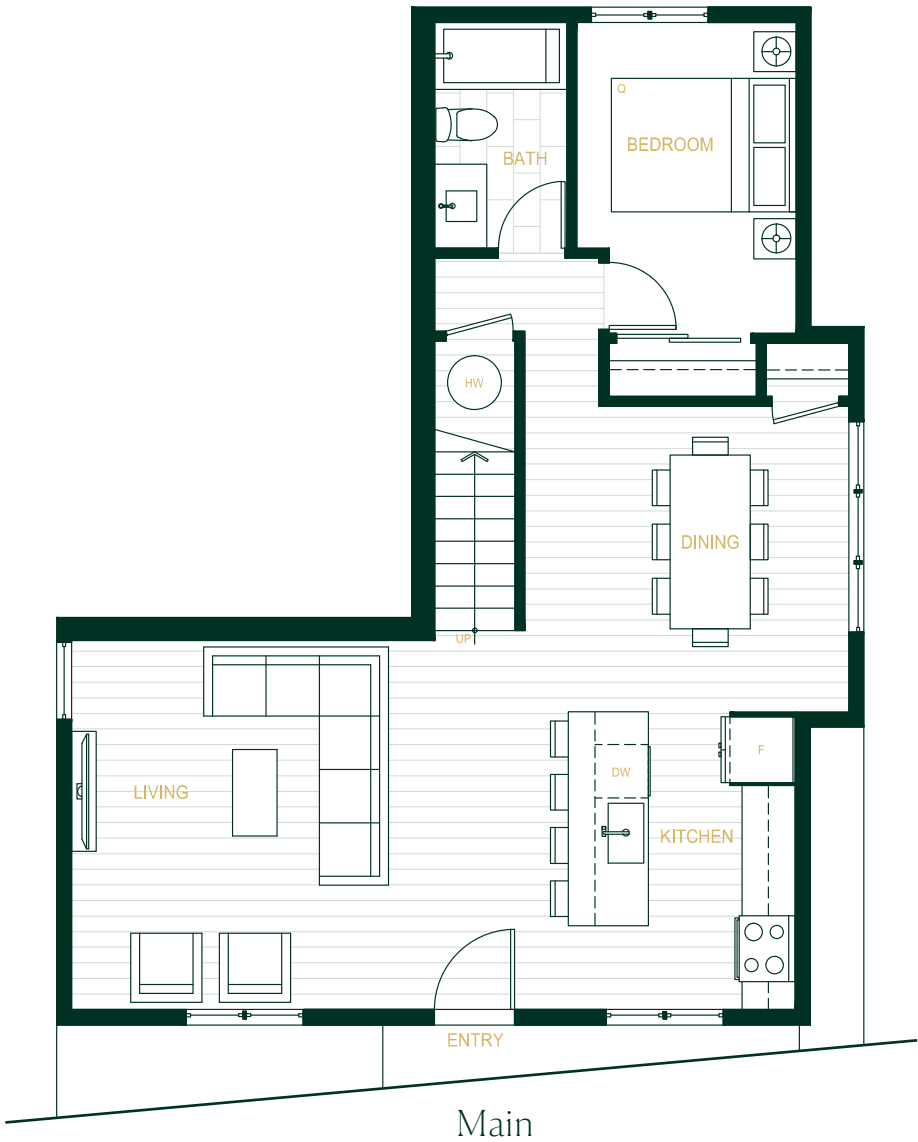
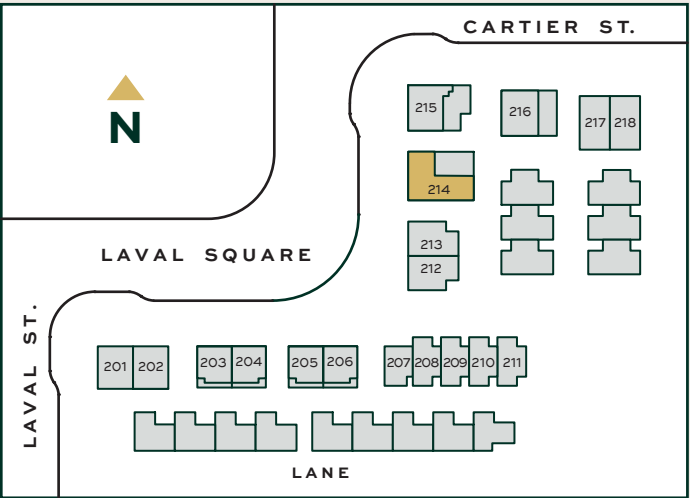


Upper

Floorplan H1

Building 8
Unit 214

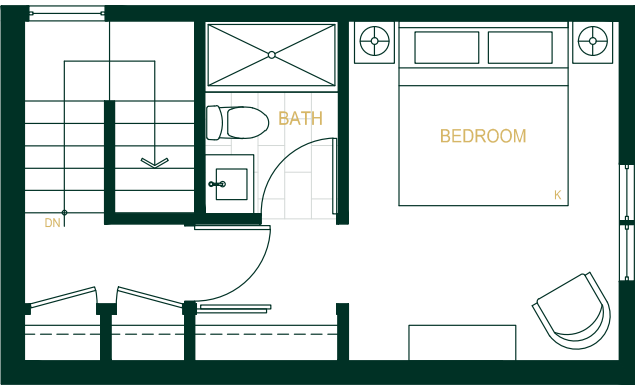
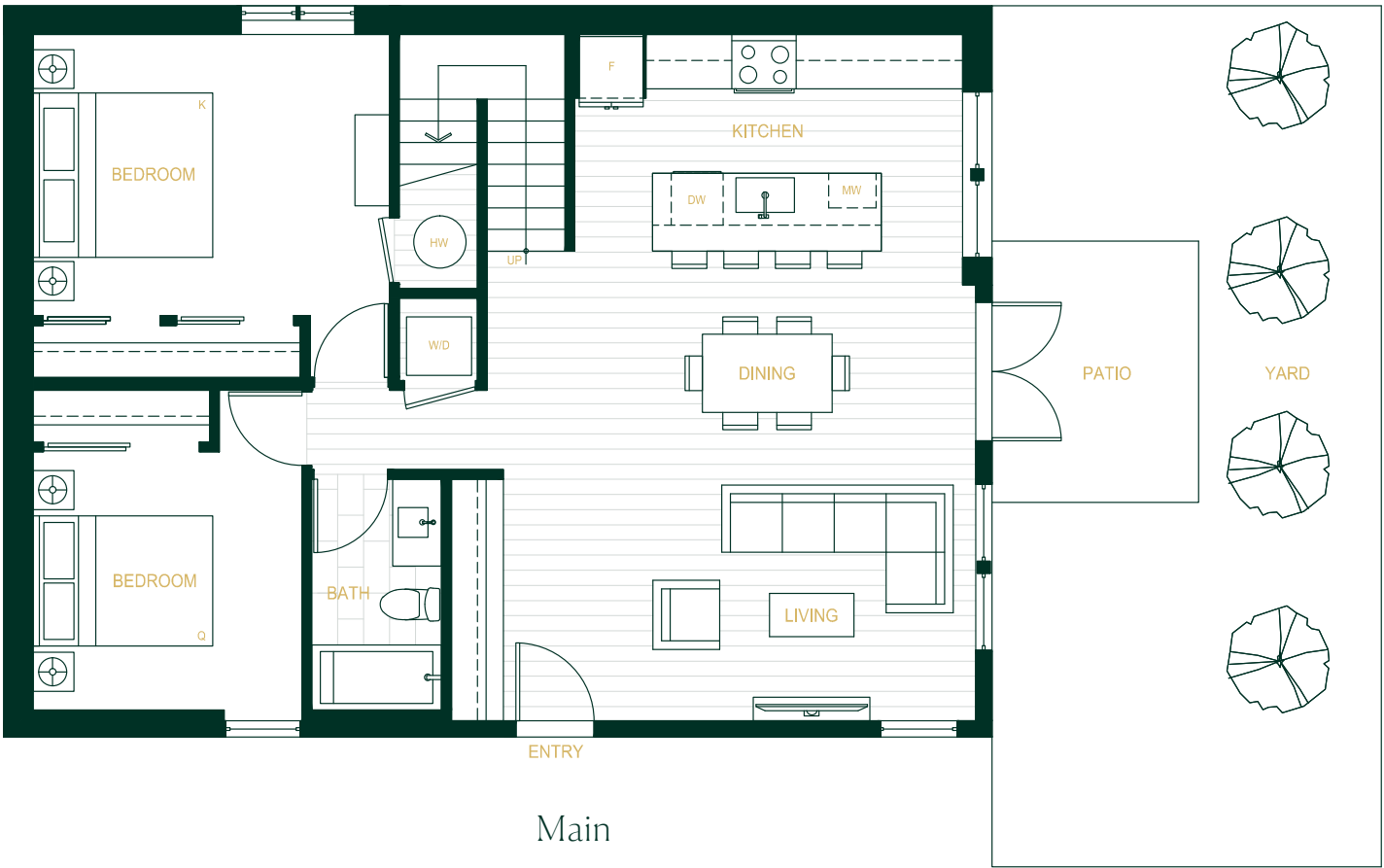
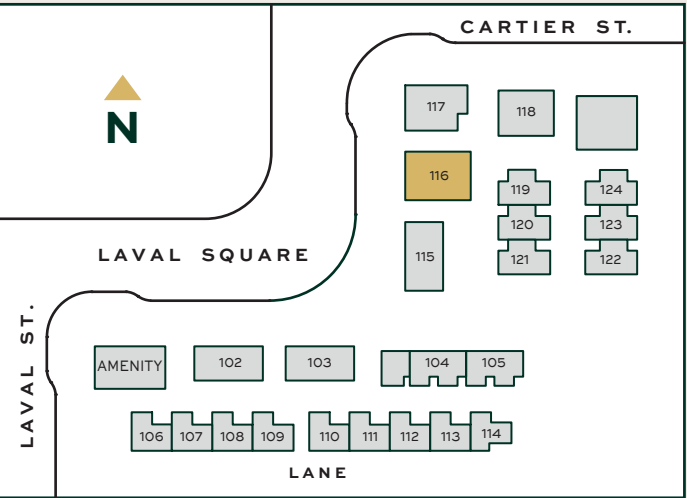
3 BEDROOM + 3 BATHROOM
1,465 SQ. FT.



Floorplan H2

Building 8
Unit 116

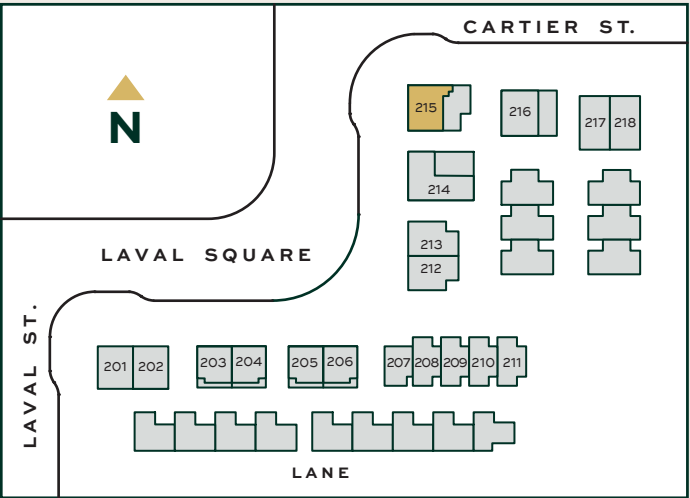
3 BEDROOM + 2 BATHROOM
1,384 SQ. FT.



Floorplan H3

Building 9
Unit 215

3 BEDROOM + 2 ½ BATHROOM
1,418 SQ. FT.



Main

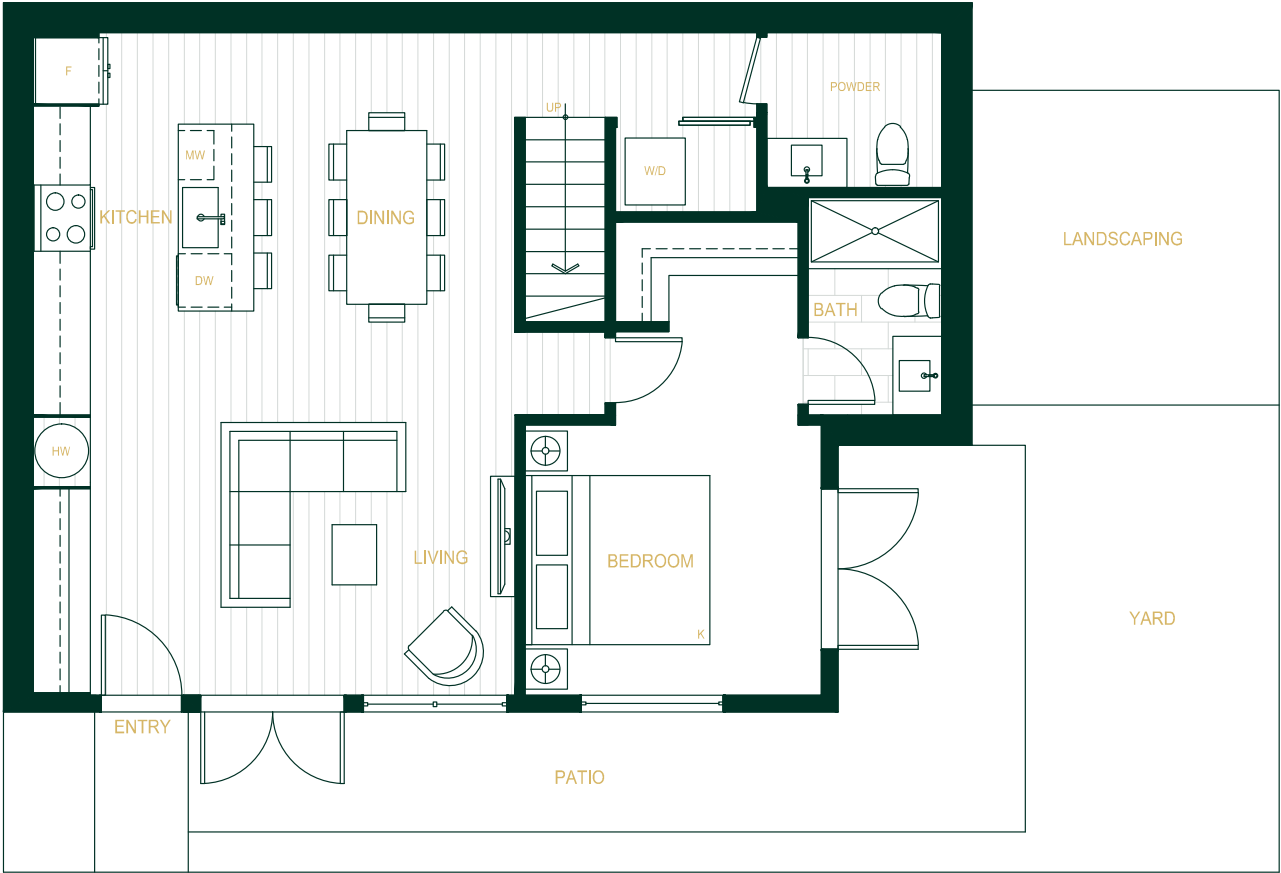
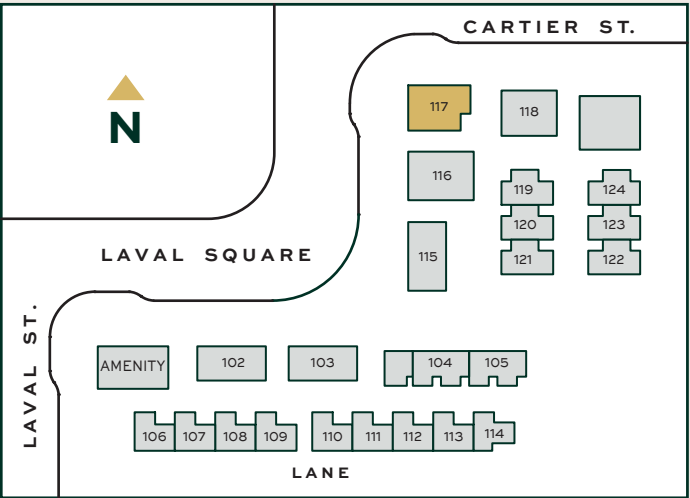


Upper

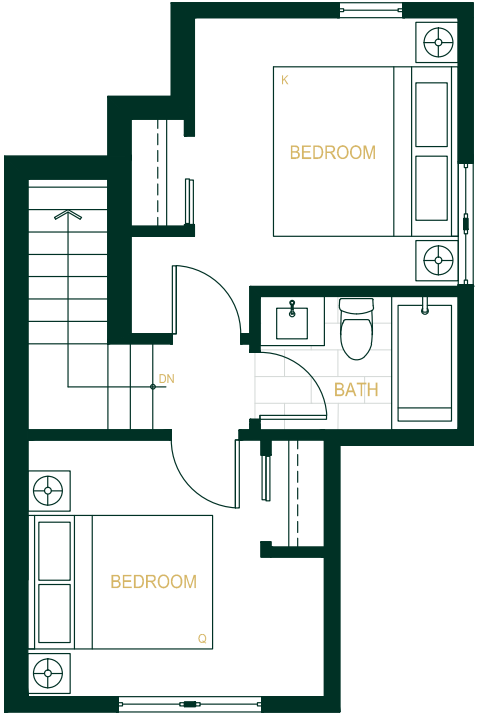
Floorplan H4

Building 9
Unit 117

3 BEDROOM + 2 ½ BATHROOM
1,248 SQ. FT.



Main

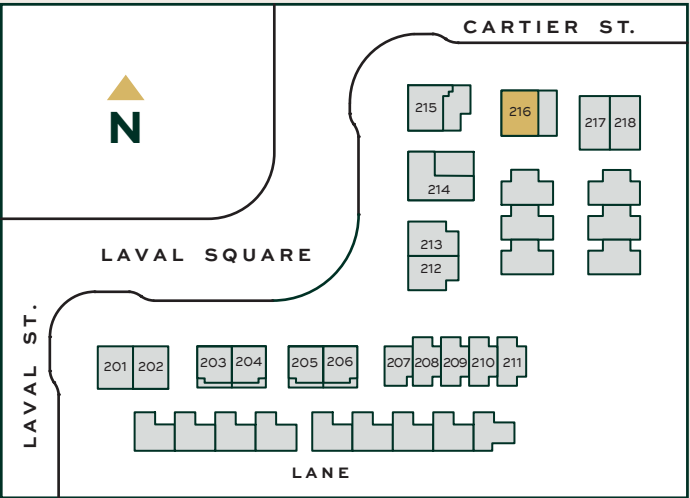


Upper

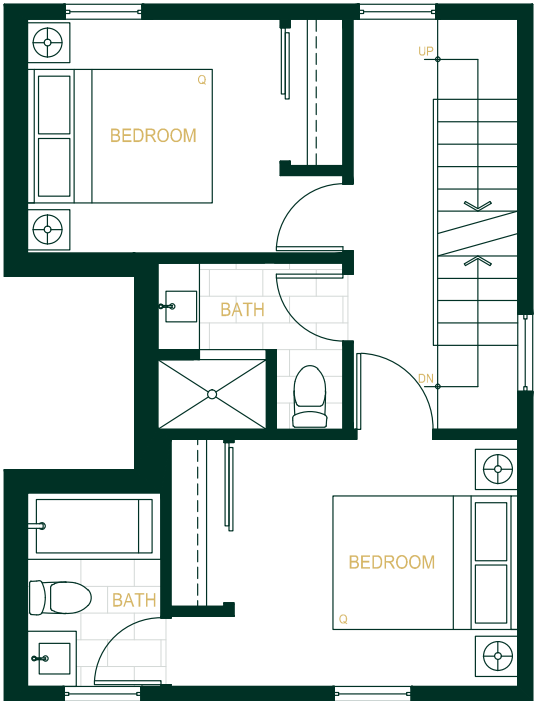
Floorplan H5

Building 10
Unit 216

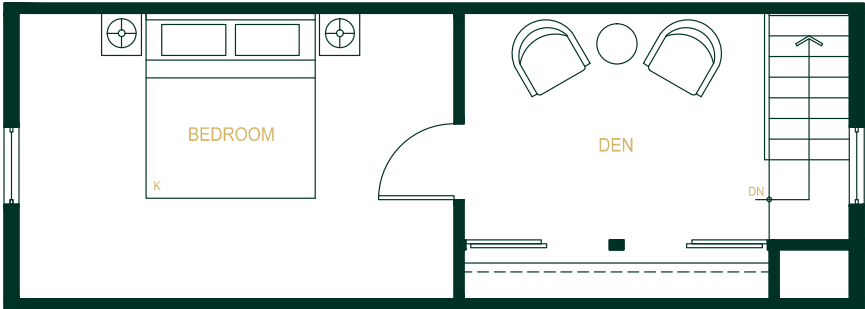
3 BEDROOM + 2 ½ BATHROOM + DEN
1,356 SQ. FT.



Main



Second

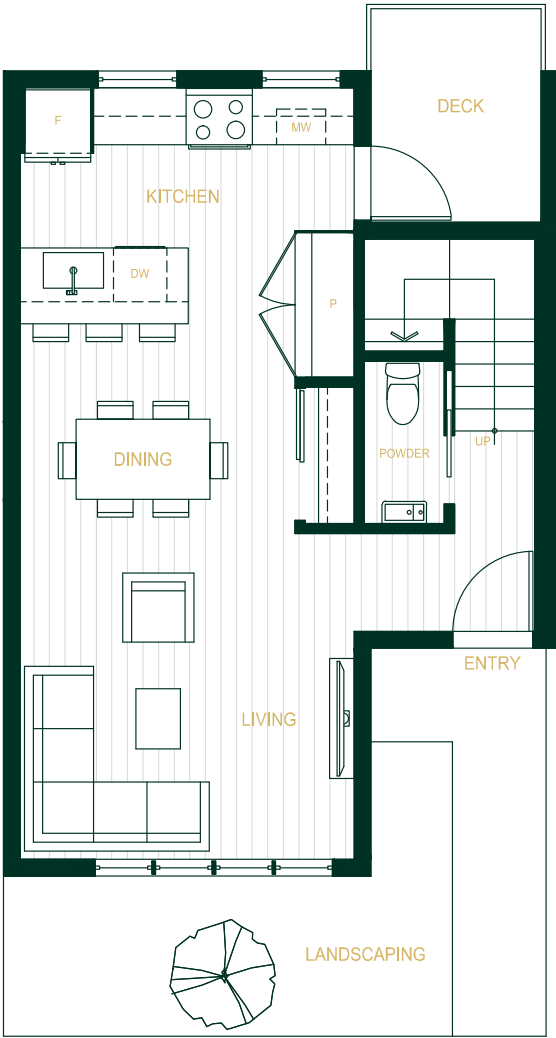
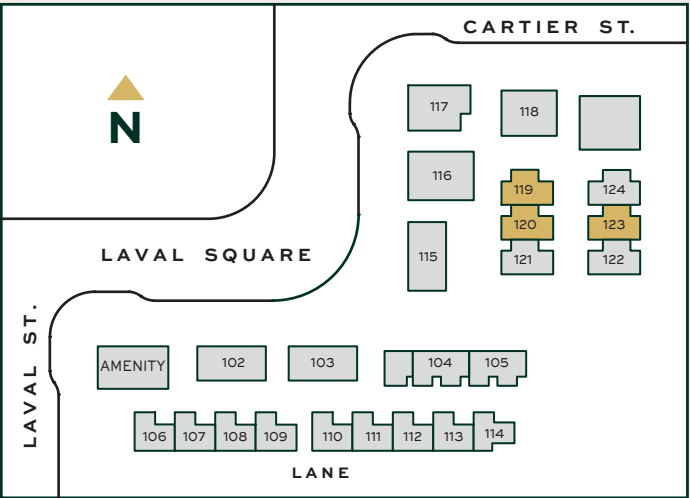


Upper

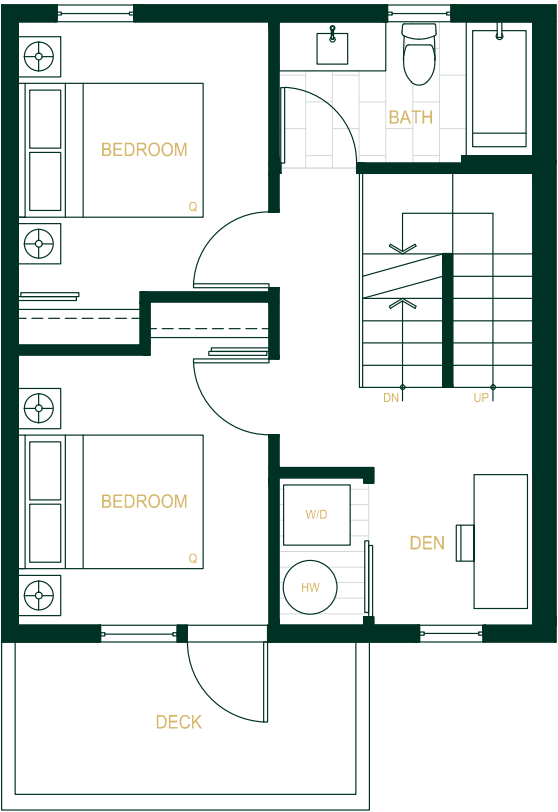
Floorplan TH6

Building 12 & 13
Units 119, 120, 123

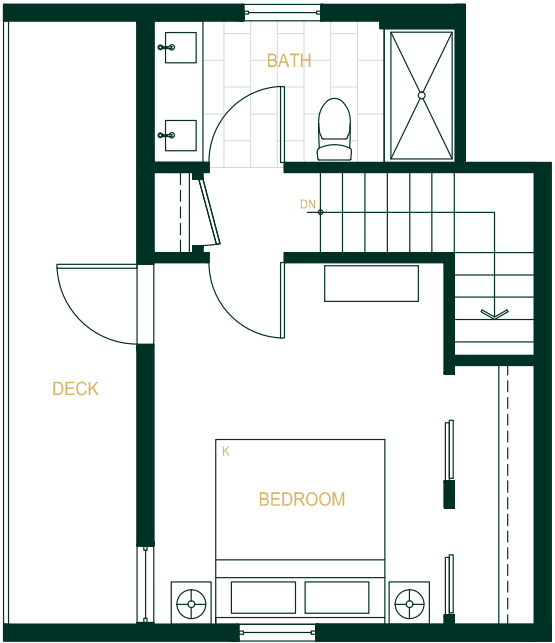
3 BEDROOM + 2 ½ BATHROOM + DEN
1,352-1,359 SQ. FT.



Main



Second

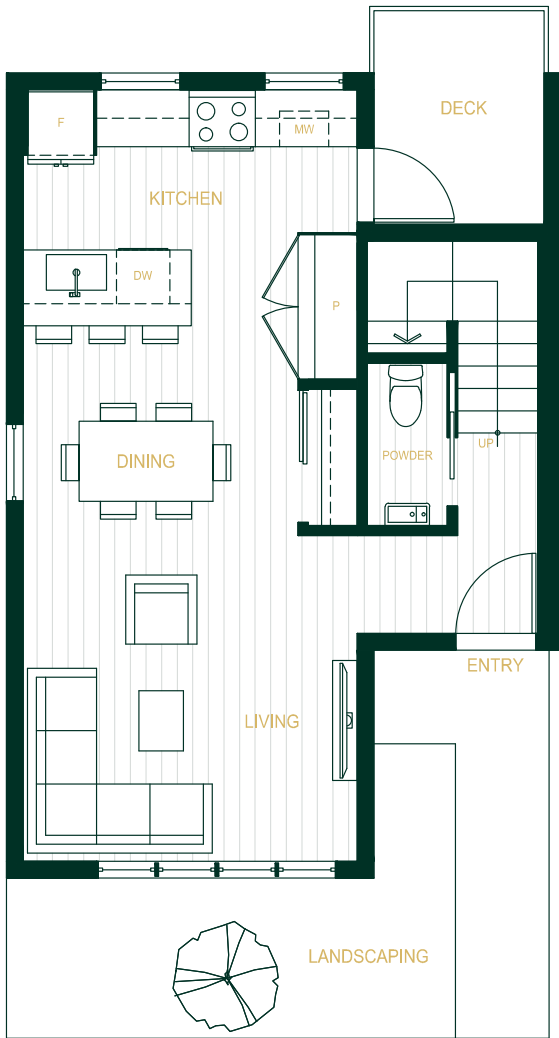
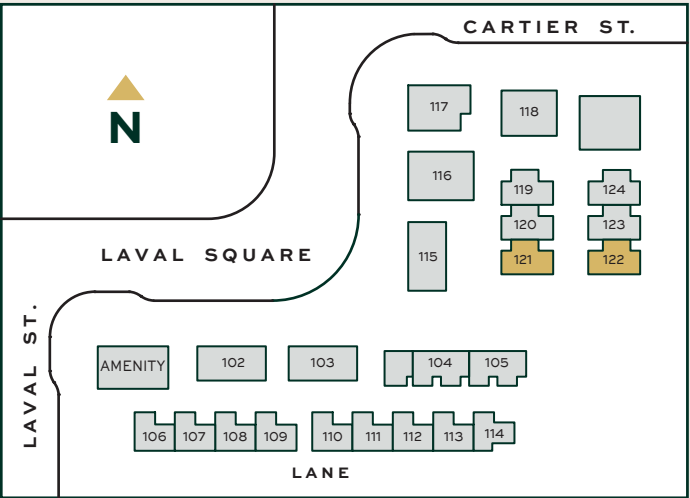


Upper

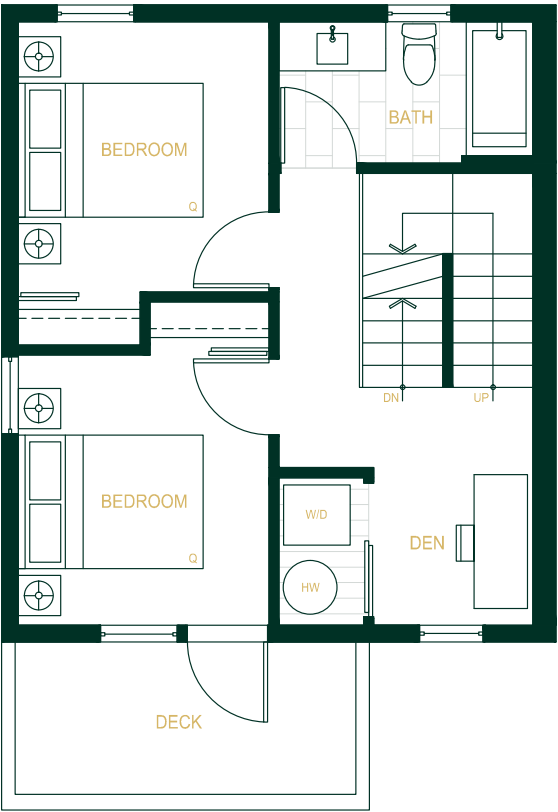
Floorplan TH6

Building 12 & 13
Units 121, 122

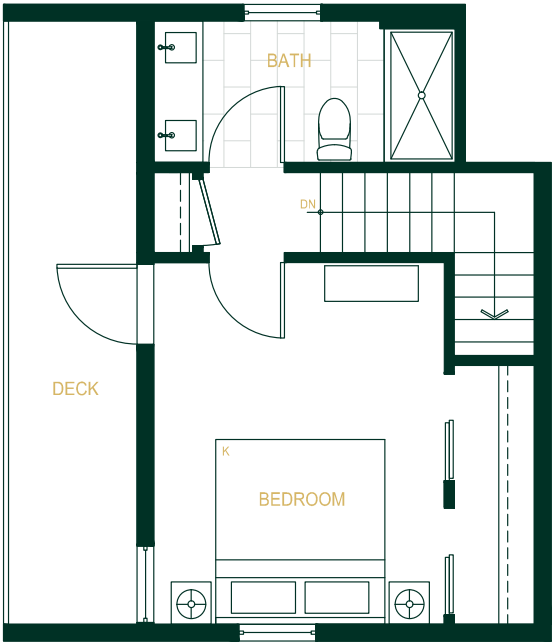
3 BEDROOM + 2 ½ BATHROOM + DEN
1,351 SQ. FT.



Main



Second



Upper

An Award Winning Team

DEVELOPER

DOMUS

Built on generations of experience. We believe our passion shines through in the homes we build. A diverse team with decades of collective experience, we are driven by the positive impact our homes have on the communities we develop.

Our values translate through our rigorous site selection, uncompromised design, and precision in construction processes to deliver superior value to the customer. Building vibrant communities begins with designing homes for the way you live.

ARCHITECT

BIRMINGHAM & WOOD

LANDSCAPE ARCHITECT

considered design inc

INTERIOR DESIGN

i3 design ..

INTERIOR DECORATION

HOUSE OF
BOHN



Century House



Amira



Zeo Kits



Victoria



www.LiveAtLaval.com

1304 Laval Square, Coquitlam
Info@LiveAtLaval.com

Liveatlaval.com

DOMUS

Macdonald
PLATINUM MARKETING

The developer reserves the right to make changes, modifications or substitutes to the building design, specifications and floorplans should they be necessary. Renderings, views, and layouts are for illustration purposes only.
This is not an offering for sale and such an offering can only be made after filing a disclosure statement. E.&O.E.